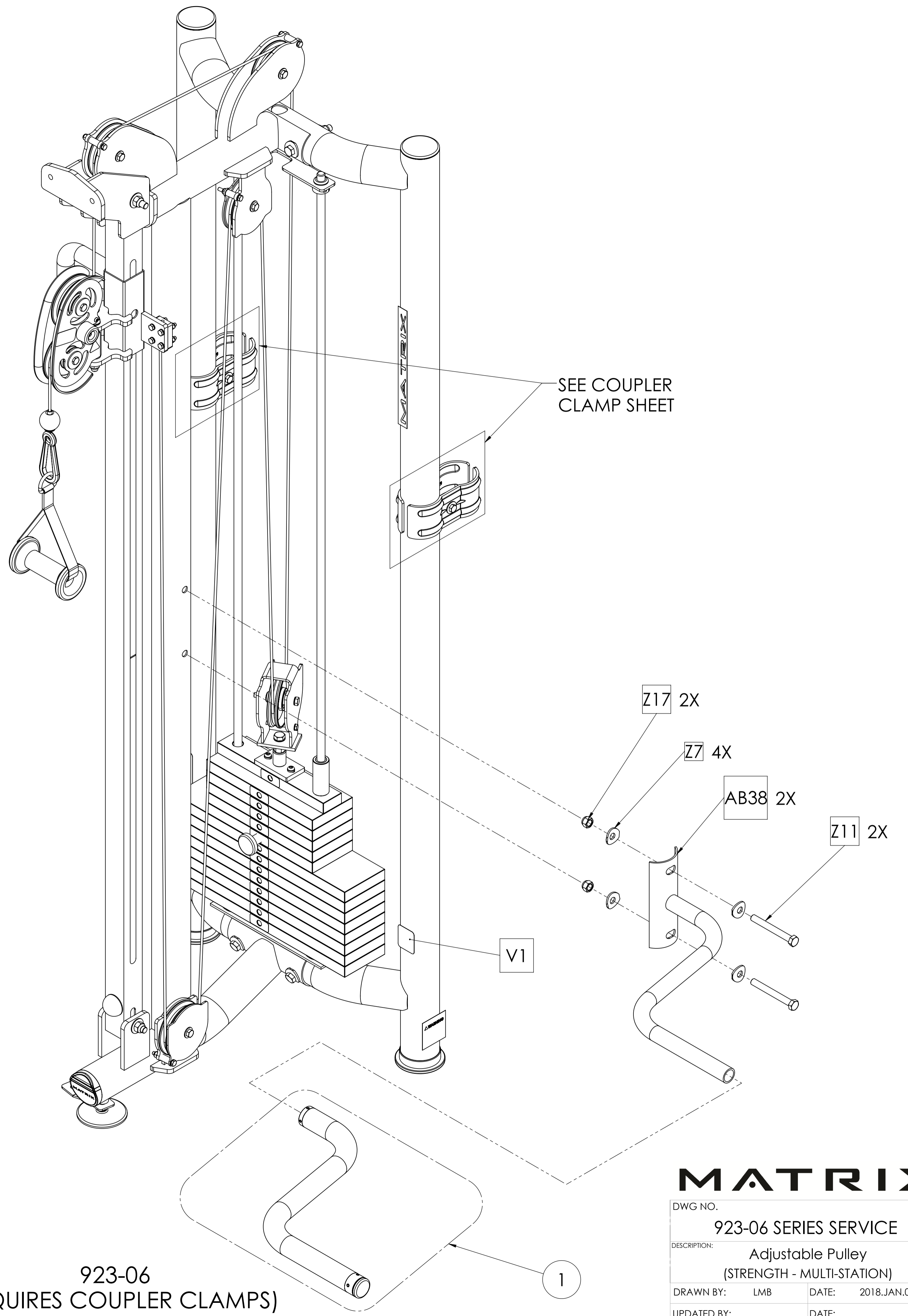
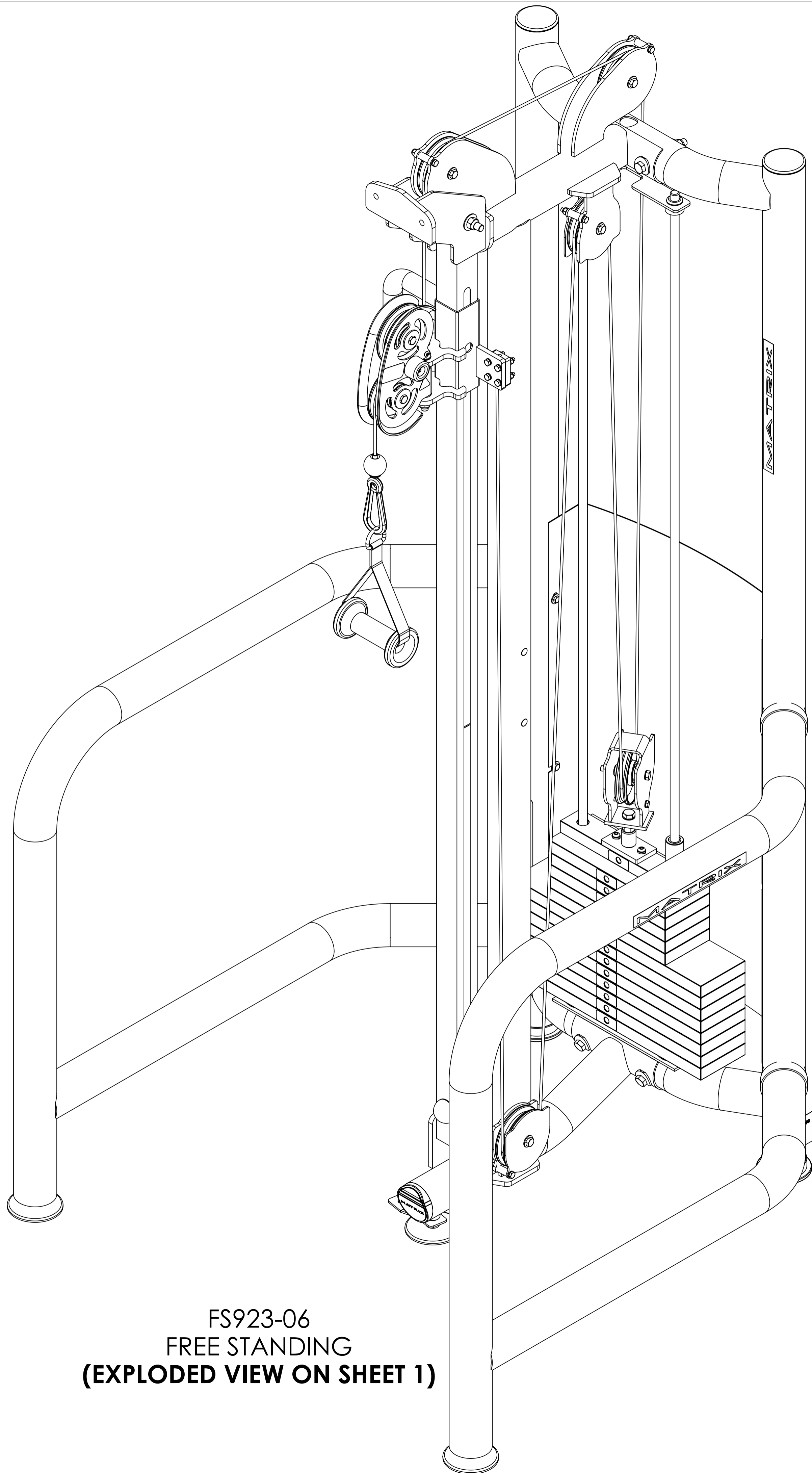
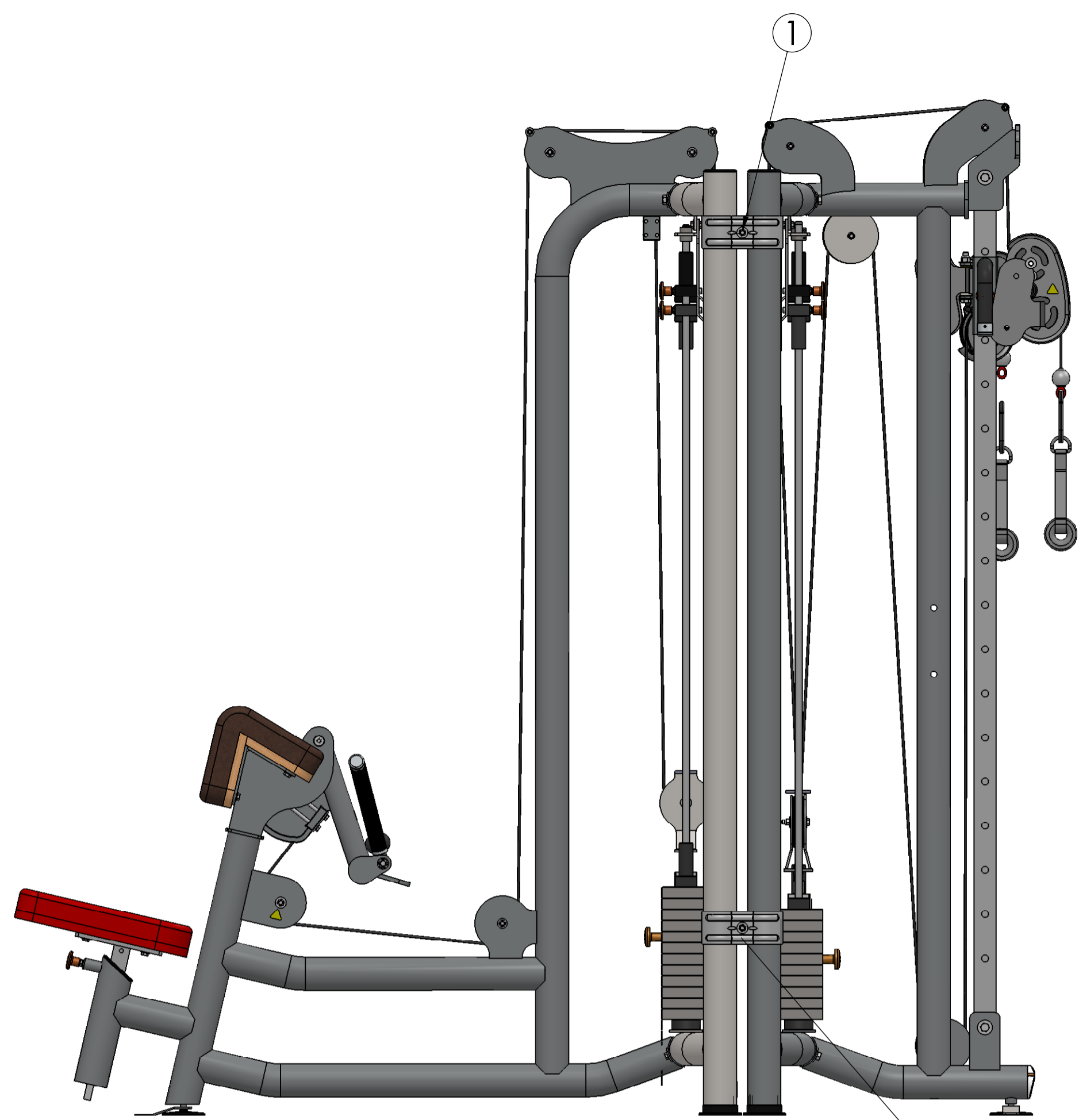


MATRIX

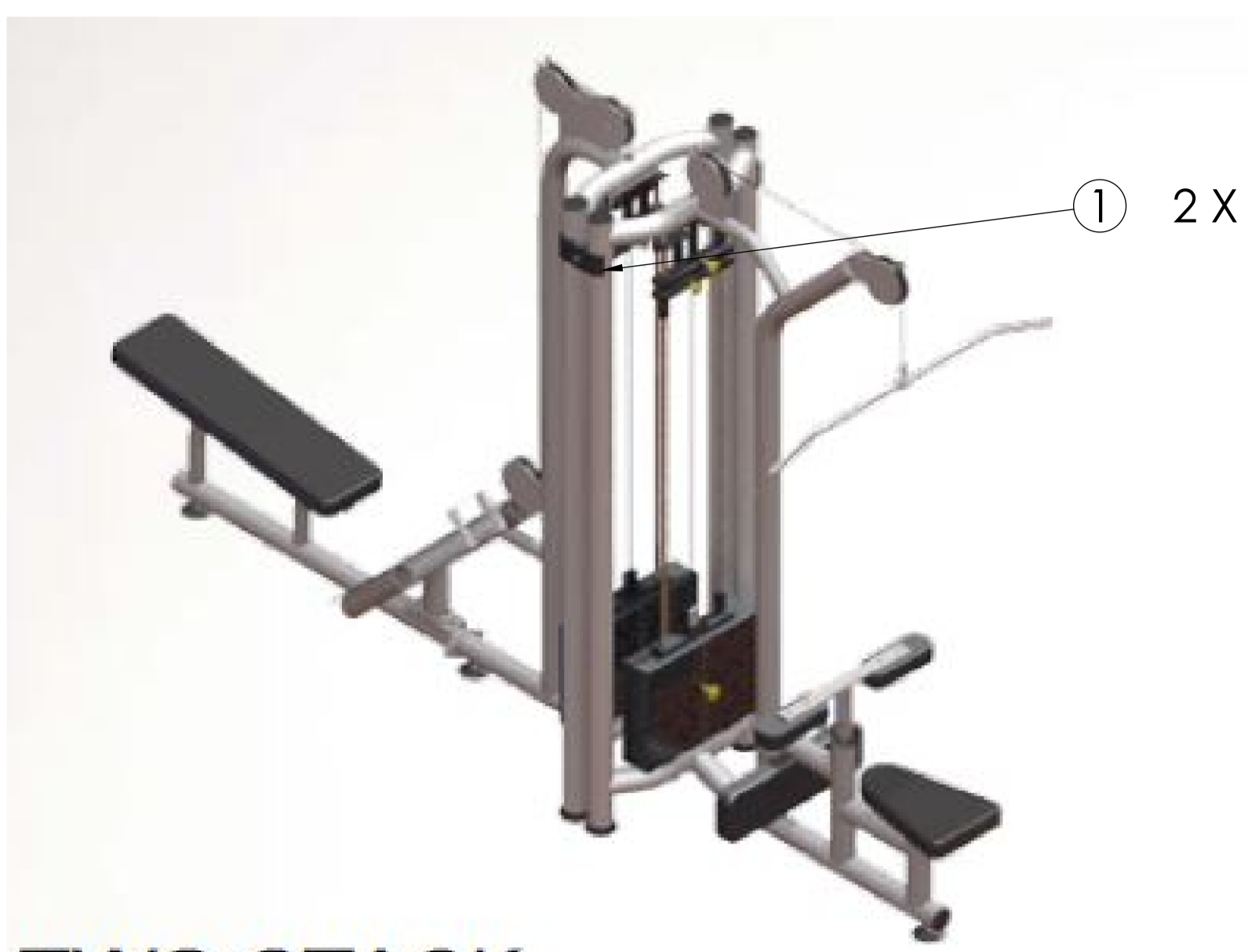
DWG NO.		923-06 SERIES SERVICE	
DESCRIPTION:			
(STRENGTH - MULTI-STATION)			
DRAWN BY:	LMB	DATE:	2018.JAN.09
UPDATED BY:		DATE:	



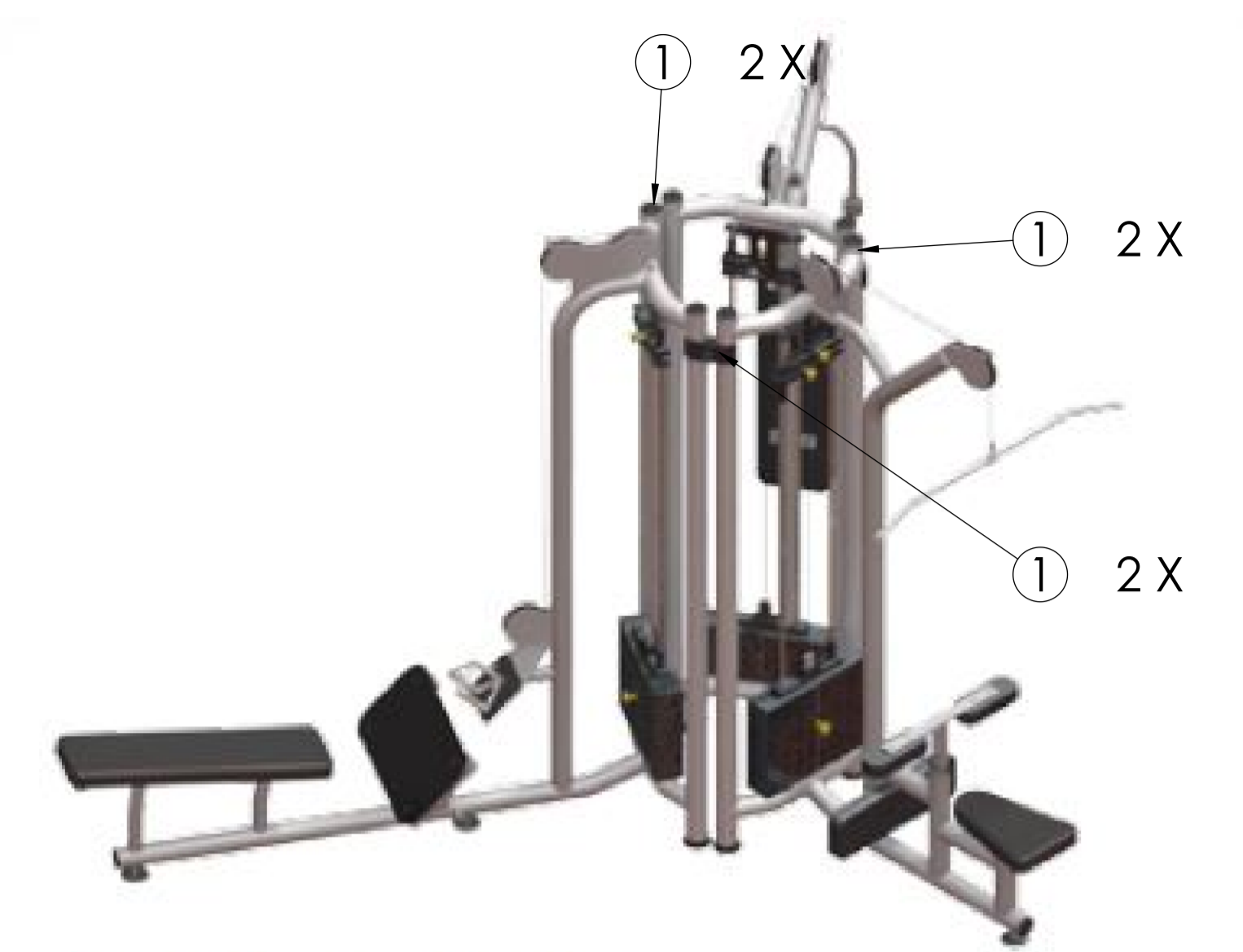
MATRIX	
DWG NO.	923-06 SERIES SERVICE
DESCRIPTION:	Adjustable Pulley (STRENGTH - MULTI-STATION)
DRAWN BY:	LMB DATE: 2018.JAN.09
UPDATED BY:	DATE:



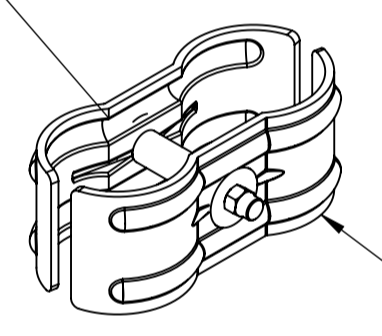
TWO STACK



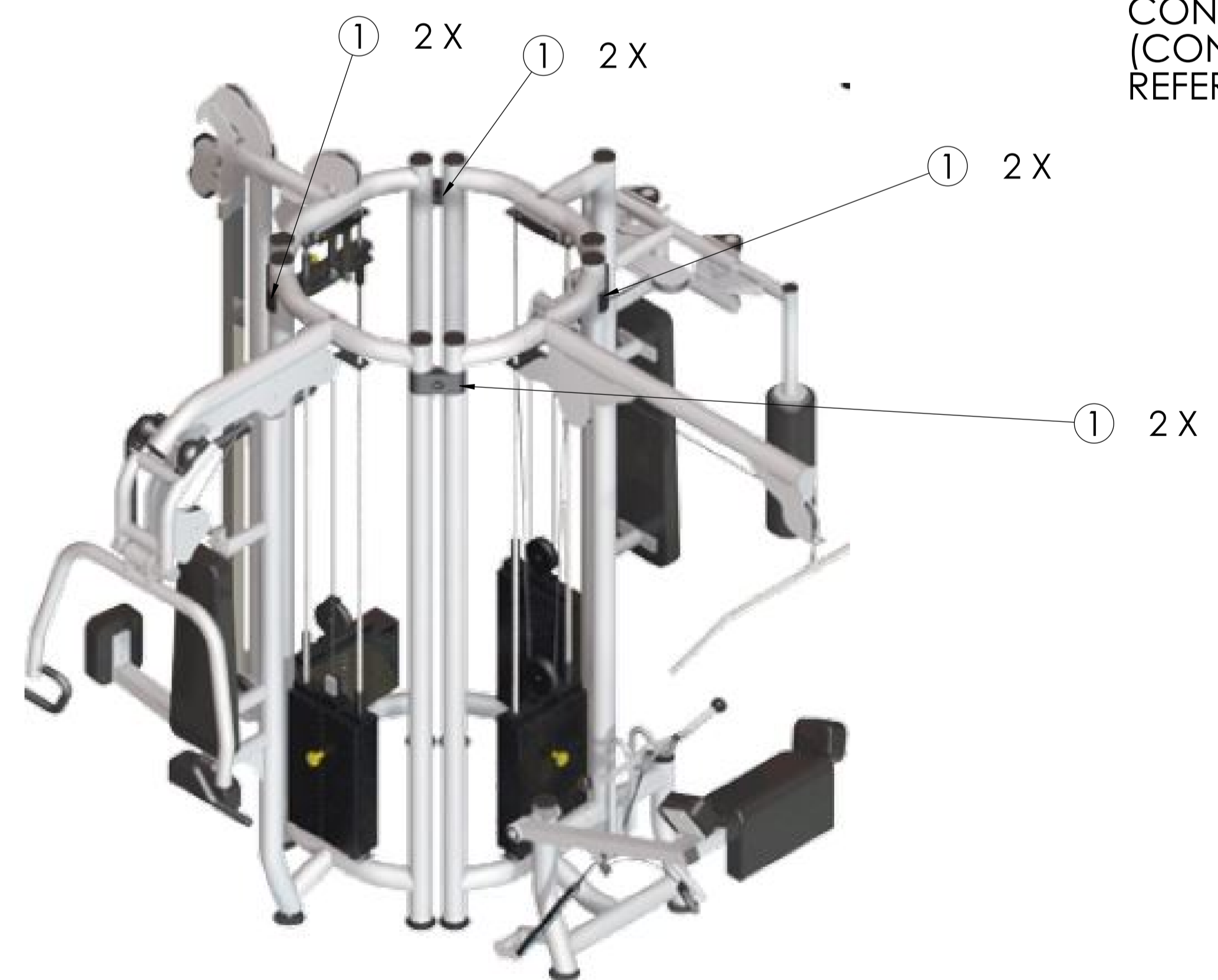
TWO STACK



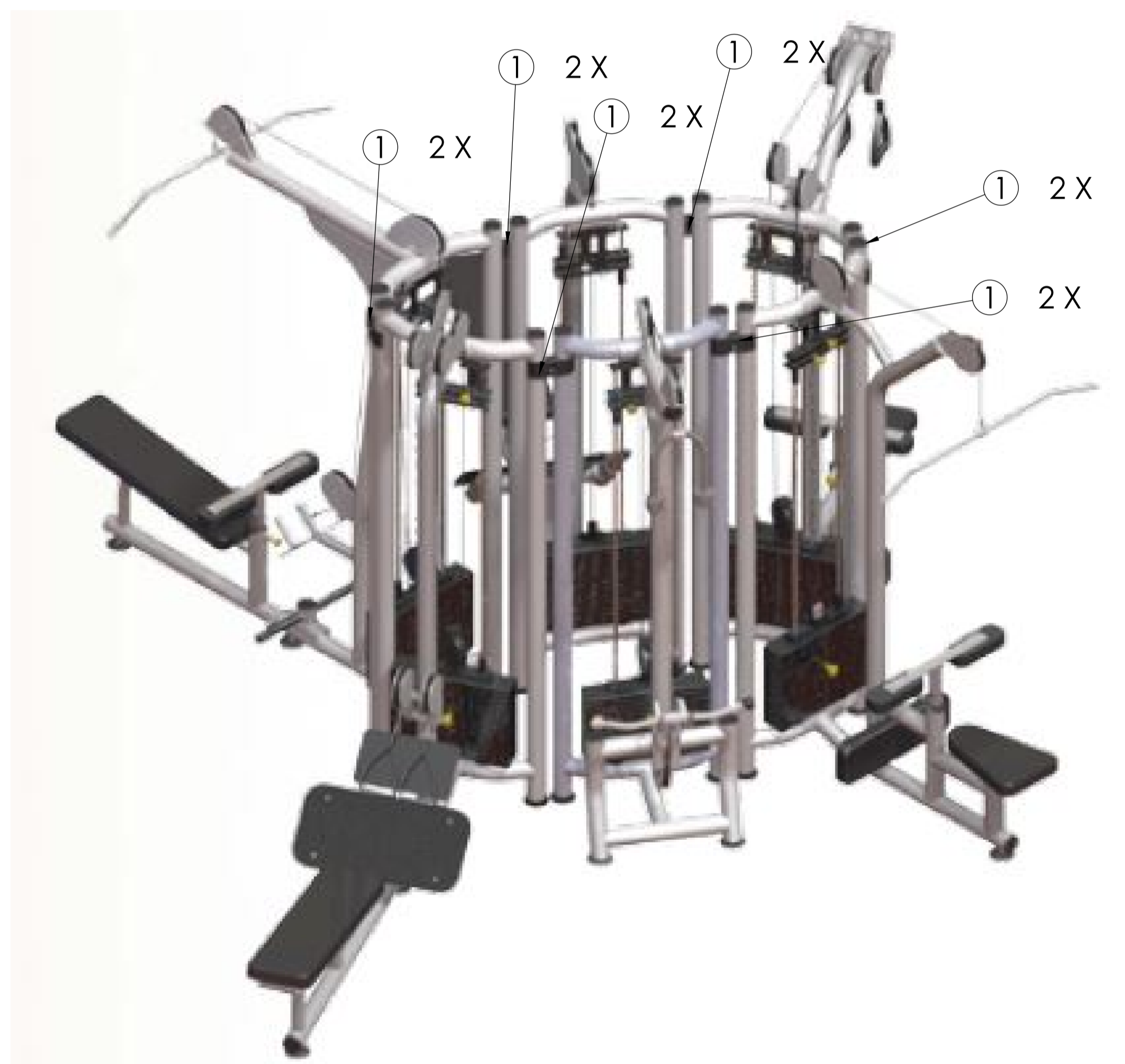
THREE STACK



EXPLODED VIEW SHOWN ON SHEET 1
 NOTE: QUANTITY REQUIRED FOR EACH CONFIGURATION WILL VARY
 (CONFIGURATIONS SHOWN ARE FOR REFERENCE ONLY)



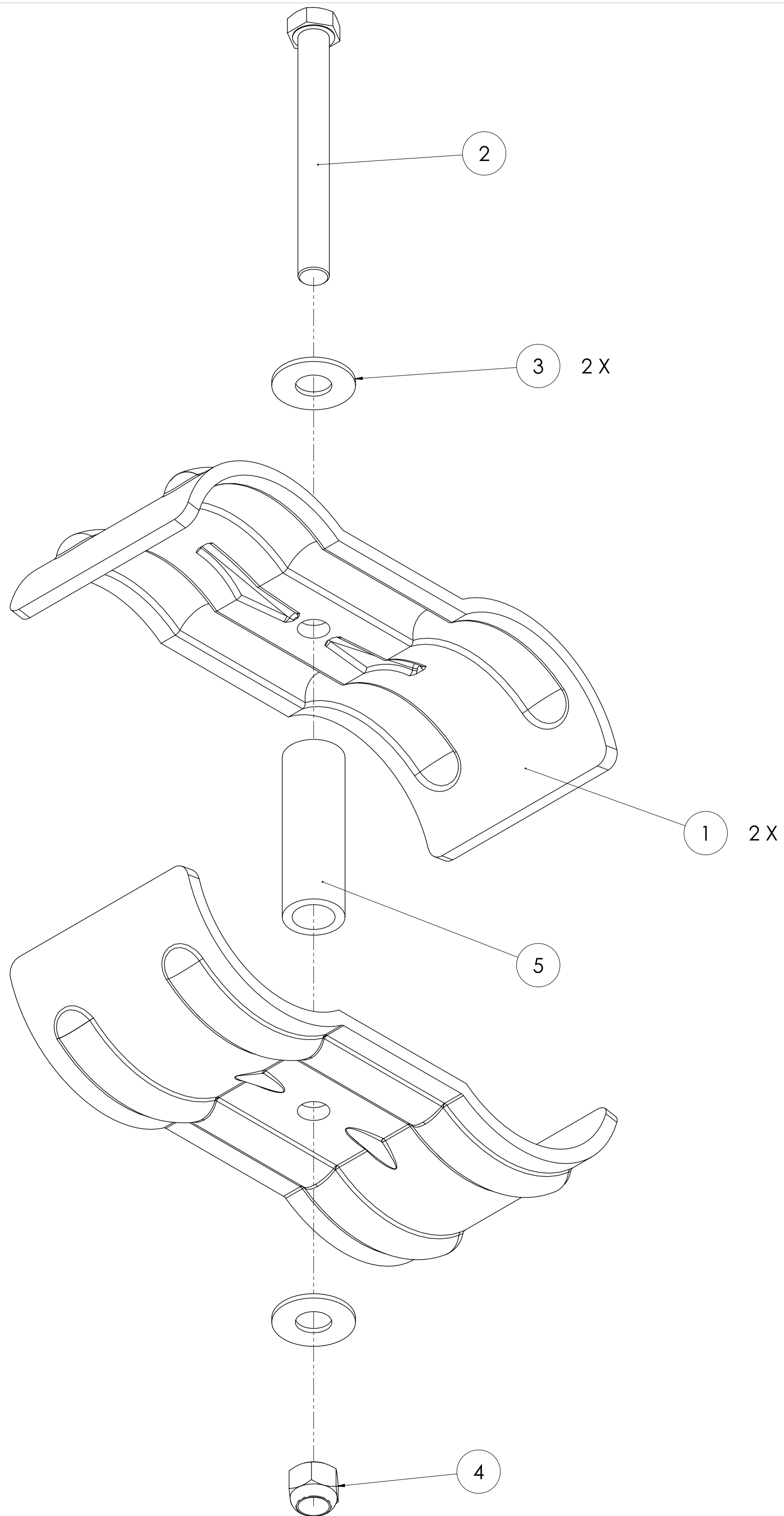
FOUR STACK



SIX STACK

MATRIX

DWG NO.		160-257 SERVICE	
DESCRIPTION:		COUPLER(CONFIGURATIONS) (Strength - Multi Station)	
DRAWN BY:	LMB	DATE:	2016.JAN.14
UPDATED BY:		DATE:	



MATRIX

DWG NO.

160-257 SERVICE

DESCRIPTION:

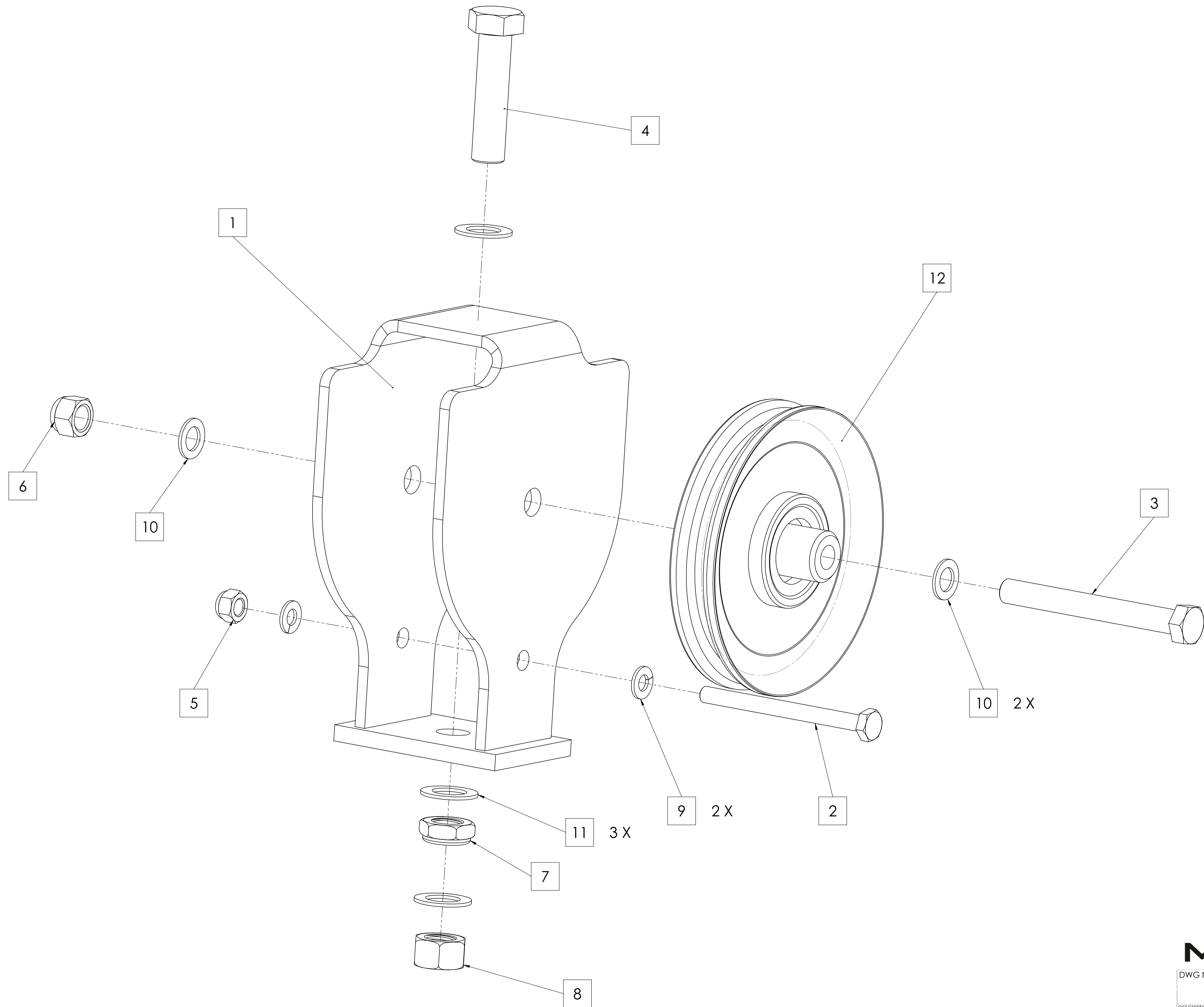
900 SERIES TOWER CLAMP (SINGLE)
(Strength - Multi Station)

DRAWN BY: LMB

DATE: 2016.JAN.14

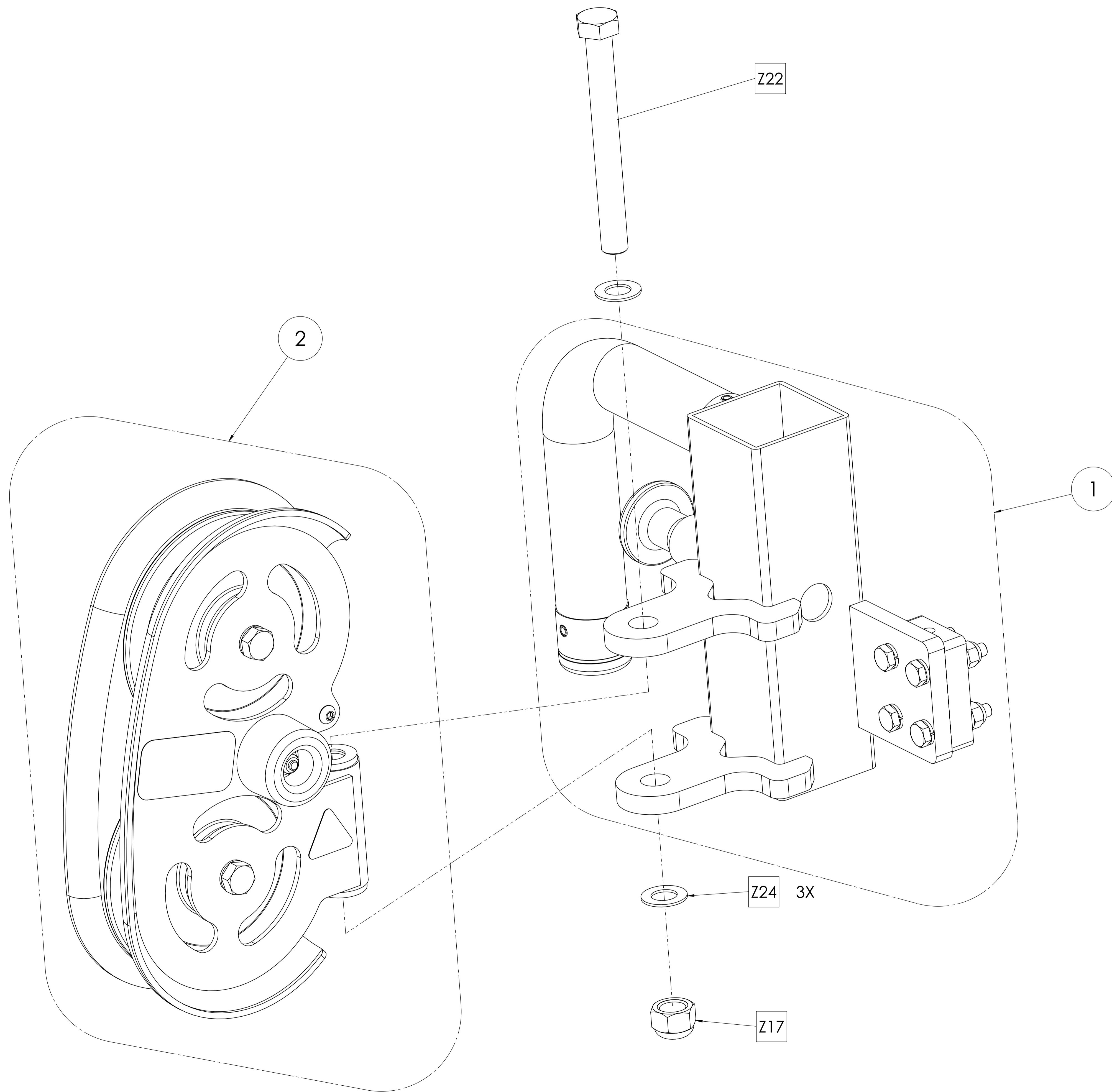
UPDATED BY:

DATE:



MATRIX

DWG NO.		160-865 SERVICE	
DESCRIPTION:		PULLEY;WEIGHT STACK ASSY (Strength)	
DRAWN BY:	LMB	DATE:	2016.MAR.25
UPDATED BY:	--	DATE:	--



MATRIX

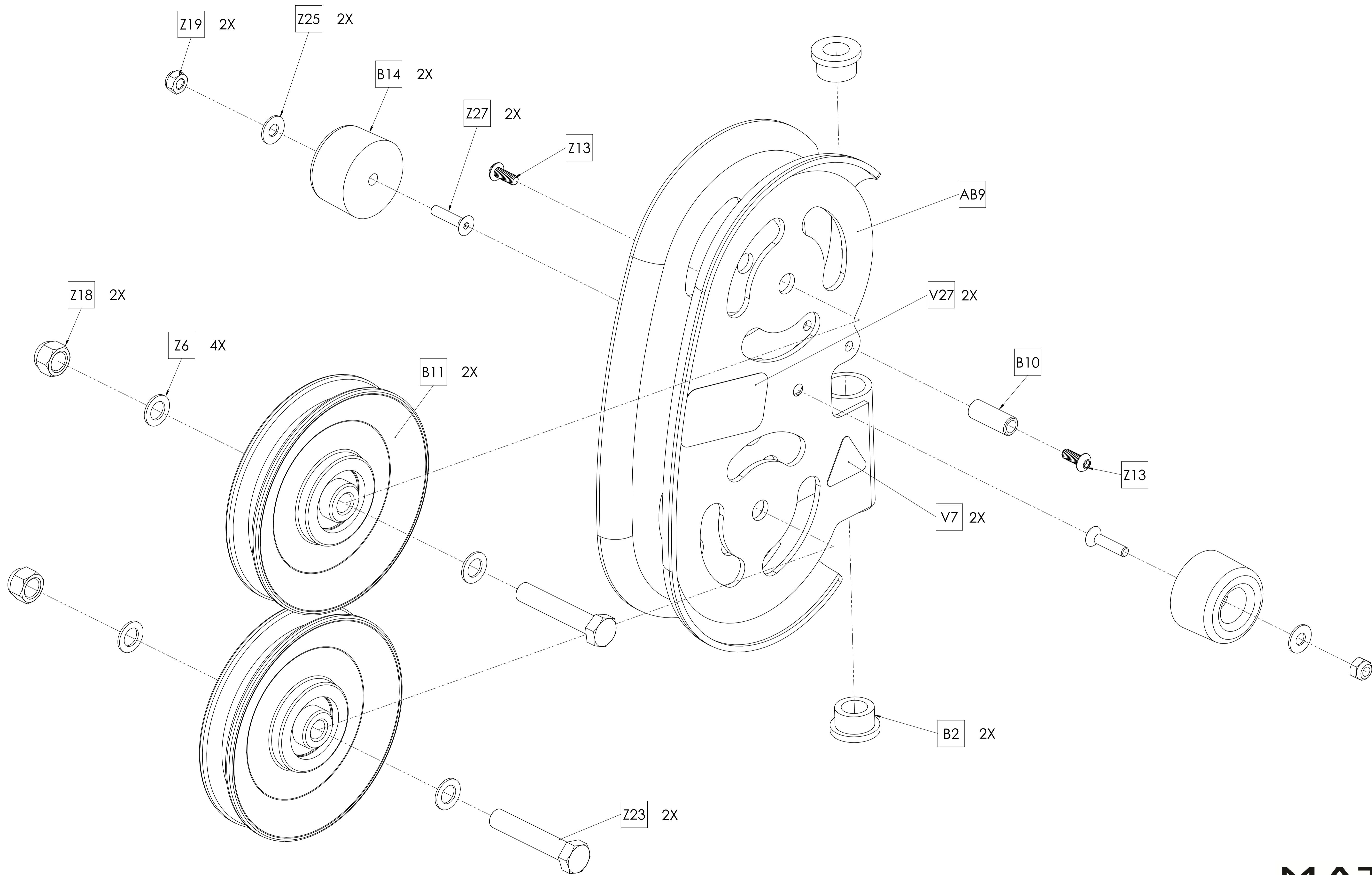
DWG NO.

160-881 SERVICE

DESCRIPTION:
DOUBLE PULLEY;BOOK;FORMED
(Strength)

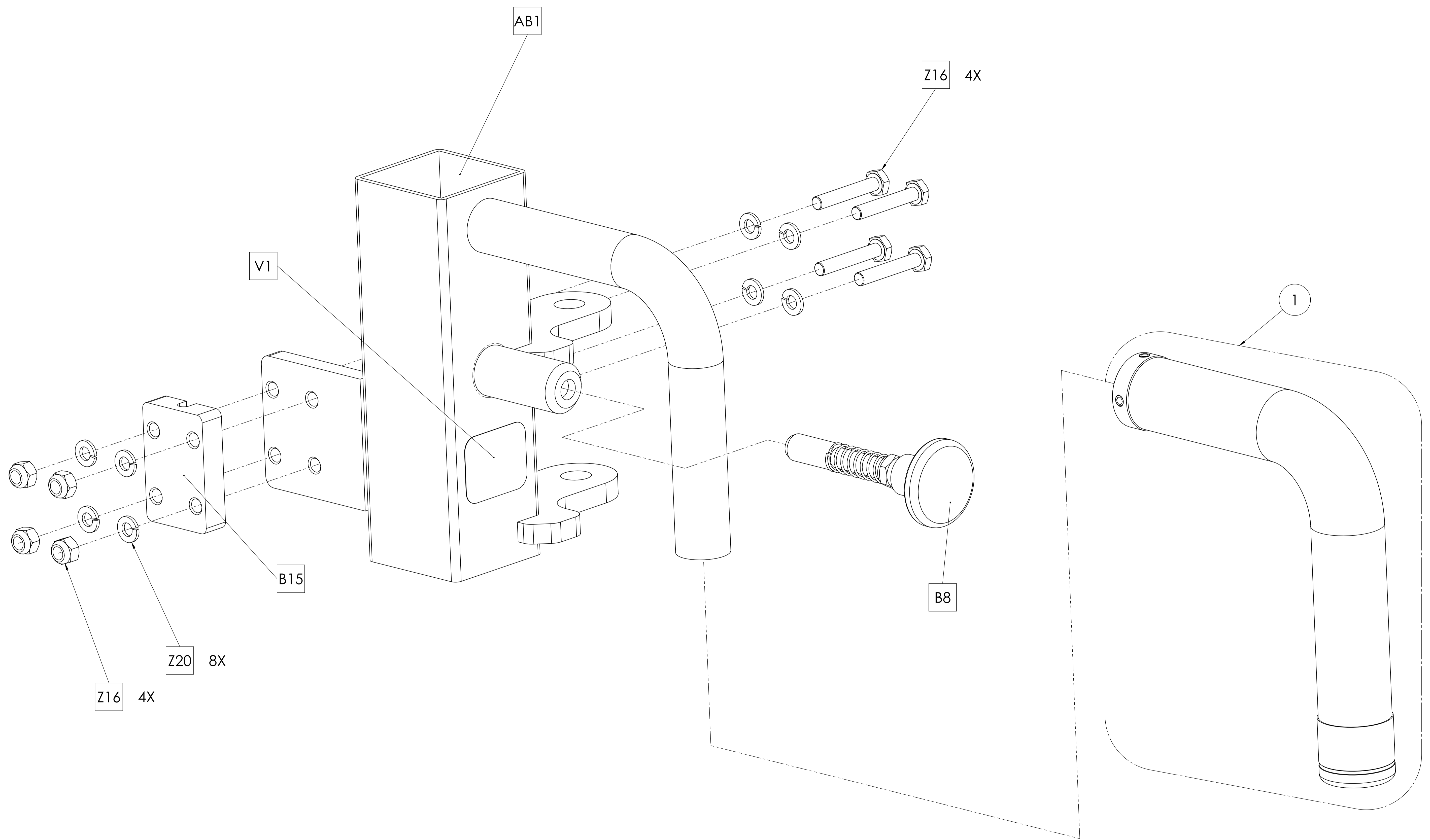
DRAWN BY: LMB DATE: 2016.MAR.25

UPDATED BY: -- DATE: --



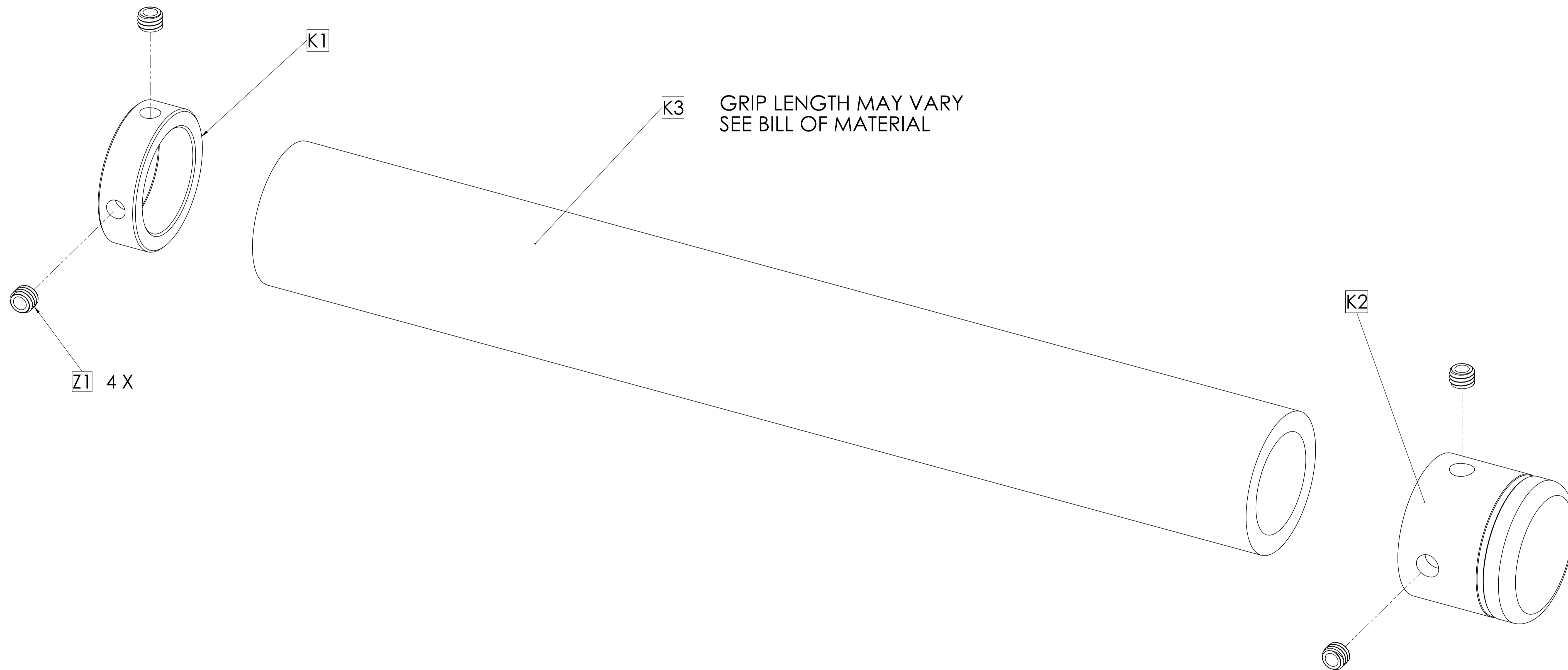
MATRIX

DWG NO.		
161-147 SERVICE		
DESCRIPTION: DOUBLE PULLEY;BOOK;FORMED (Strength)		
DRAWN BY:	LMB	DATE: 2016.MAR.25
UPDATED BY:	--	DATE: --



MATRIX

DWG NO.		
161-148 SERVICE		
DESCRIPTION: SLIDE ASSEMBLY; FORMED BOOK (Strength)		
DRAWN BY:	LMB	DATE: 2016.JUL.26
UPDATED BY:	LMB	DATE: 2017.AUG.17

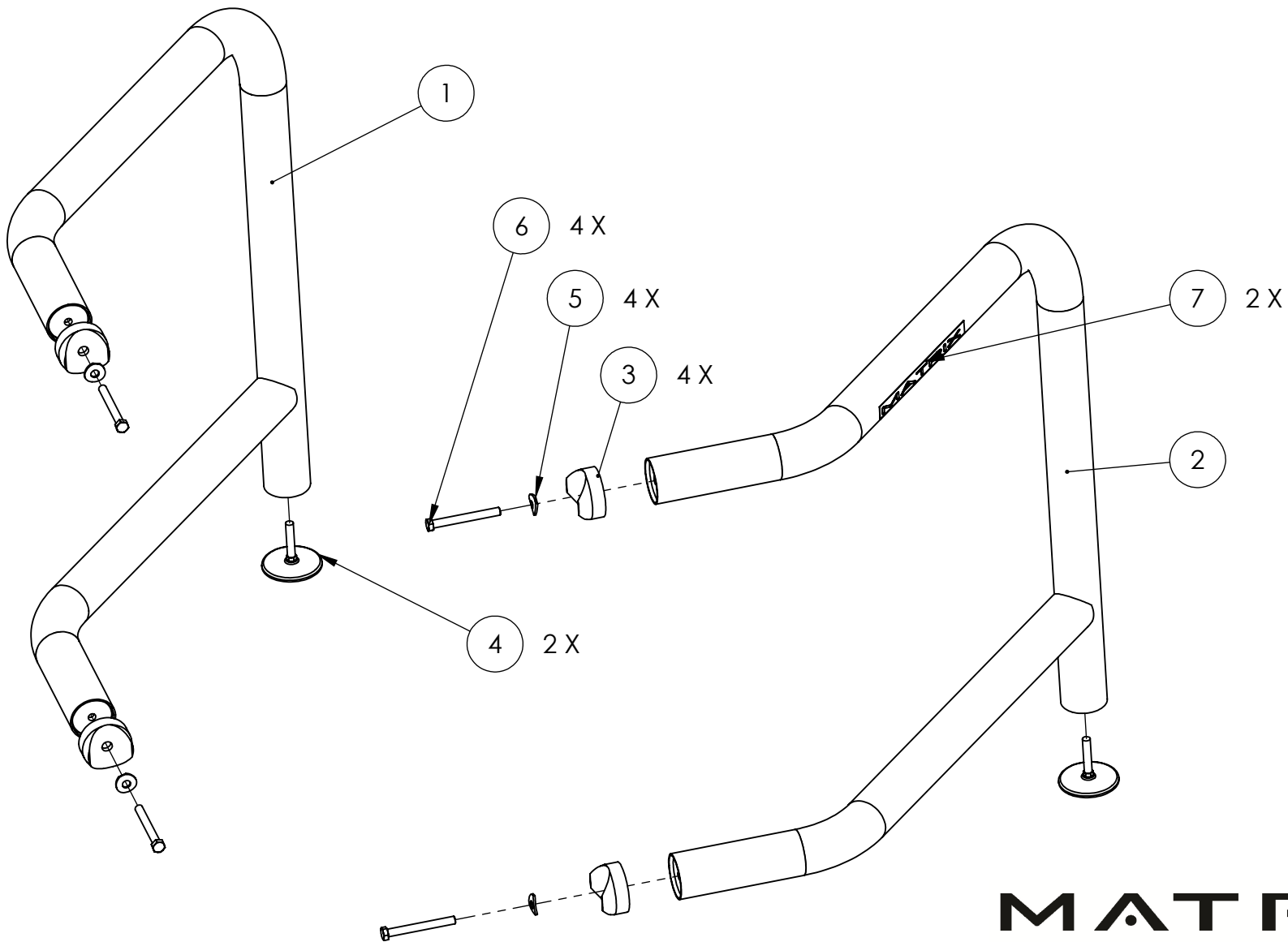


K3 GRIP LENGTH MAY VARY
SEE BILL OF MATERIAL

Z1 4 X

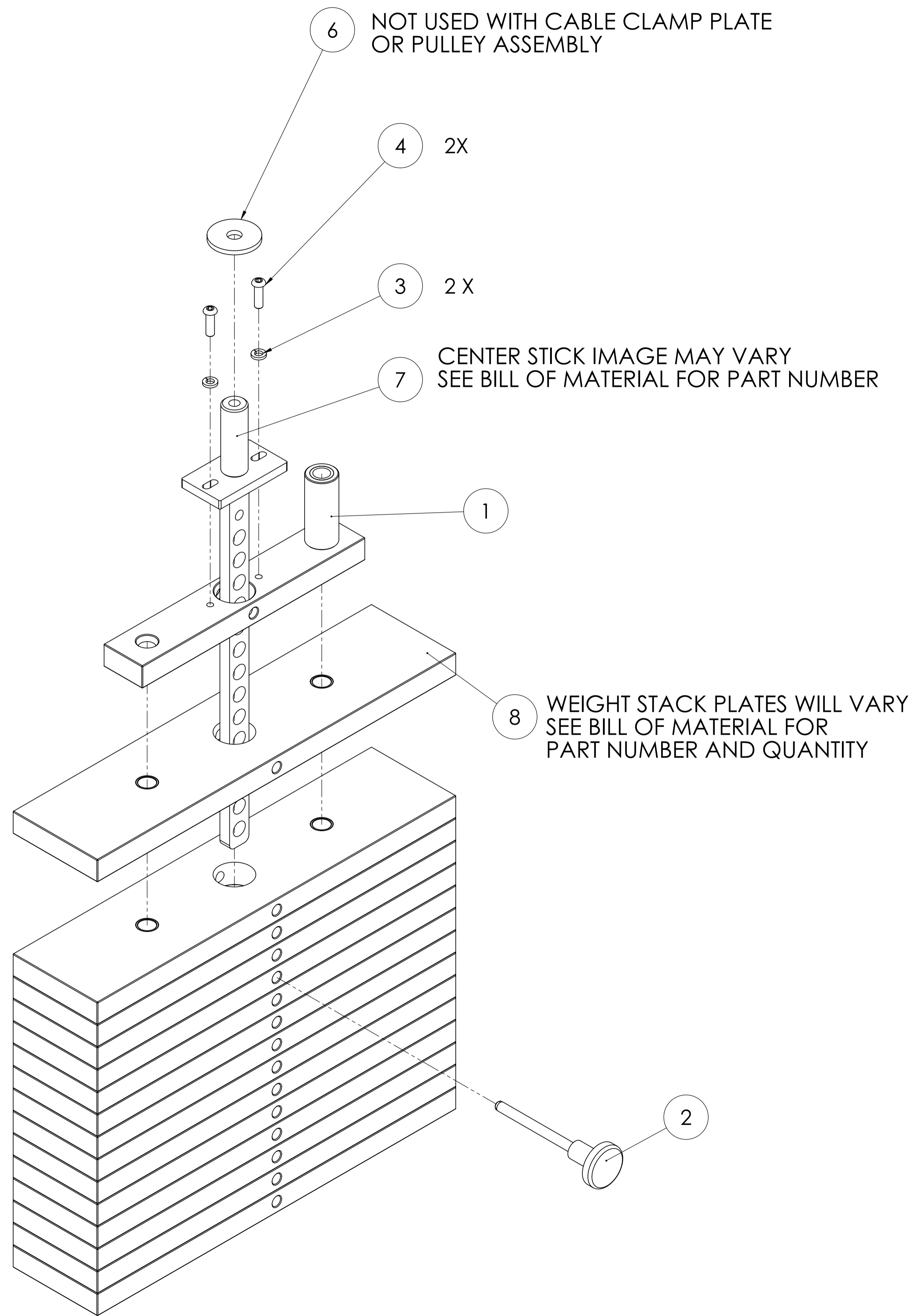
MATRIX

DWG NO:		160-056,160-057,160-058,160-059	
DESCRIPTION:		SERVICE	
		HAND GRIP	
		(RUBBER GRIP TUBE)	
DRAWN BY:	LMB	DATE:	2013.OCT.07
UPDATED BY:	LMB	DATE:	2015.JUN.05

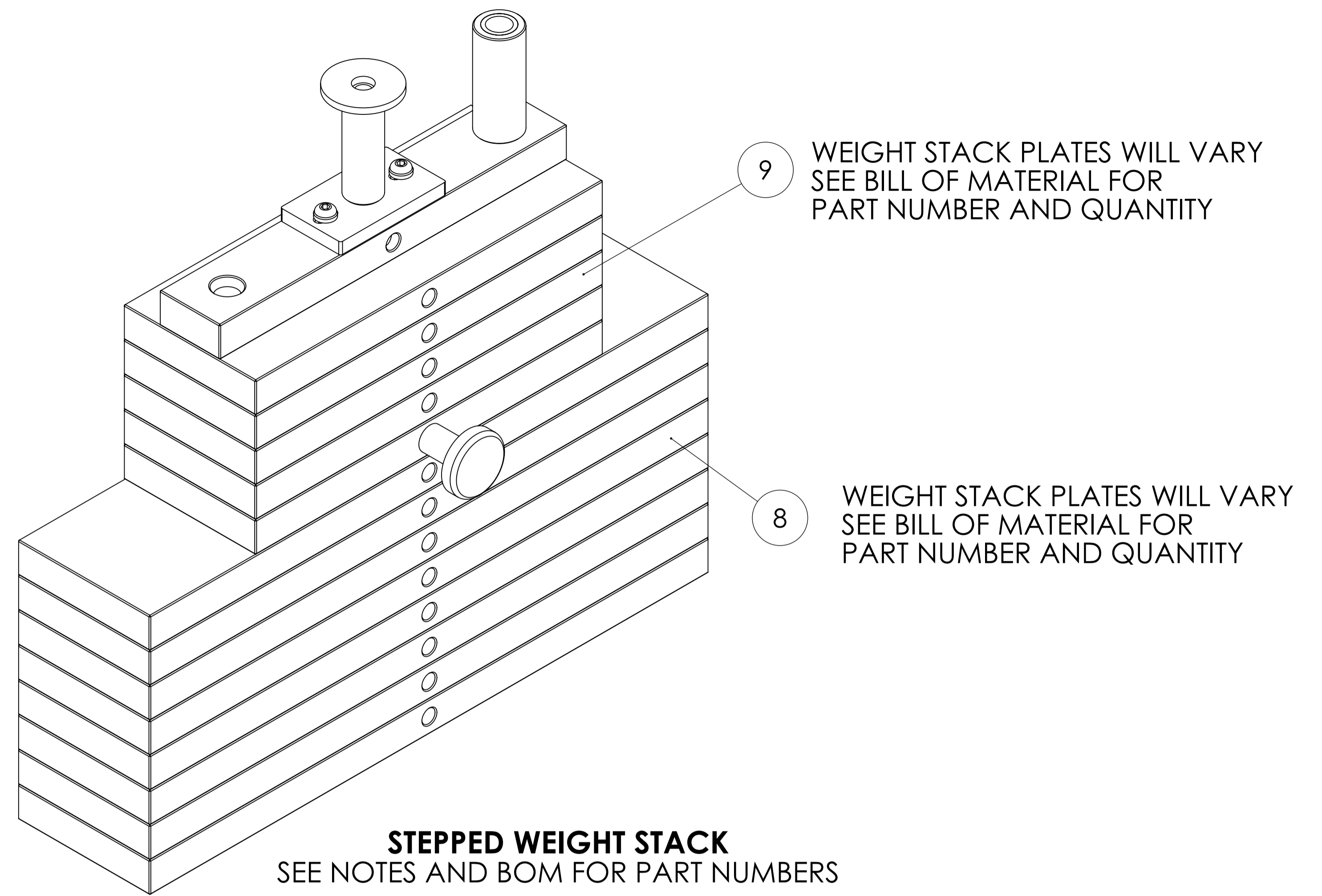


MATRIX

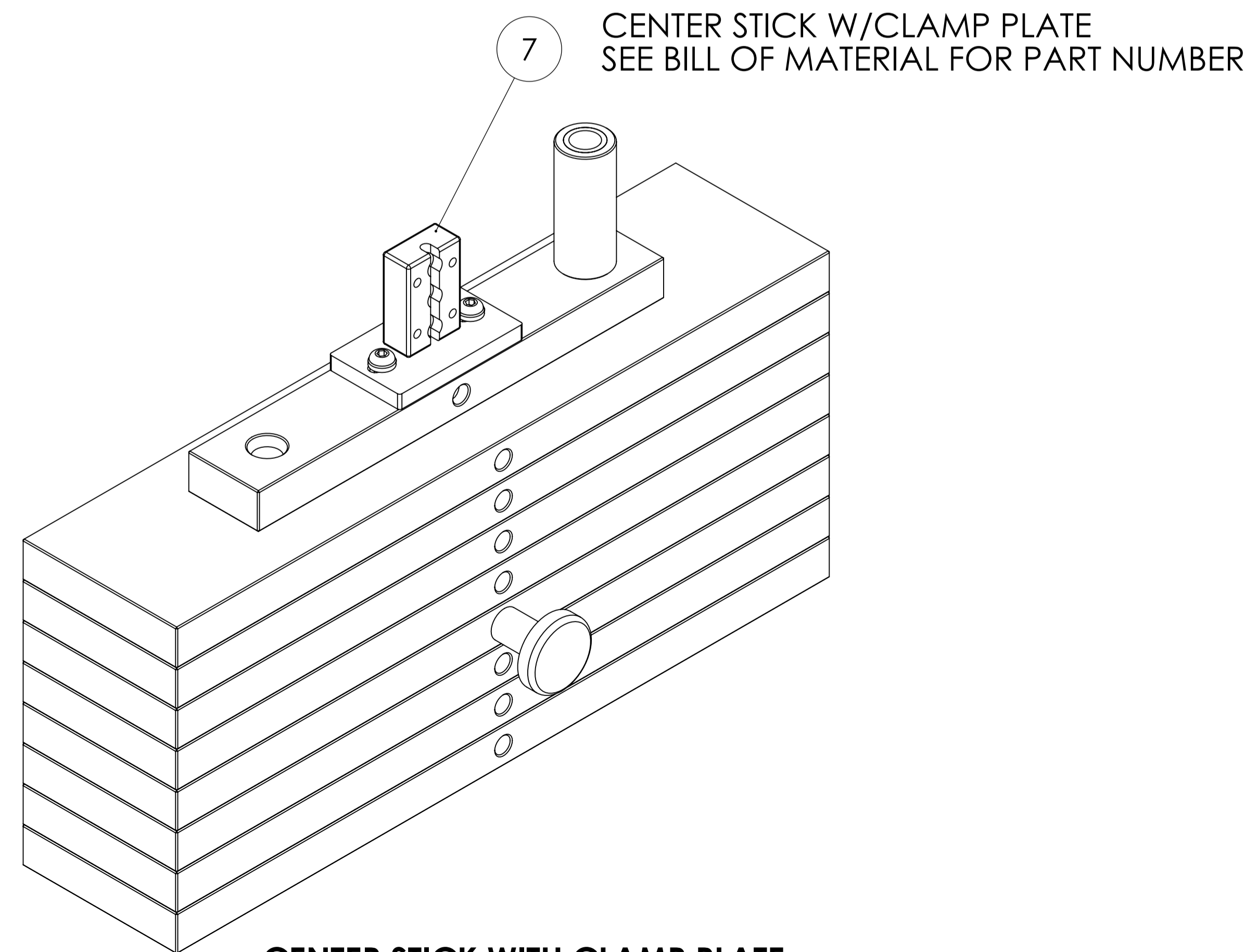
DWG. NO.	160-122 SERVICE	
DESCRIPTION:	900 TOWER SERIES FREE STANDING (SIDES)	
DRAWN:	LMB	DATE 13.08.06
UPDATED:	--	DATE --



**CENTER STICK WITH MOUNTING POST
CABLE MOUNTED WITH TAKE UP BOLT OR PULLEY
(SHOWN EXPLODED)
SEE NOTES AND BOM FOR PART NUMBERS**



**STEPPED WEIGHT STACK
SEE NOTES AND BOM FOR PART NUMBERS**



**CENTER STICK WITH CLAMP PLATE
SEE NOTES AND BOM FOR PART NUMBERS**

MATRIX

DWG NO. _WEIGHT STACK SERVICE		
DESCRIPTION: WEIGHT STACK/CENTERSTICK ASSY (Take Up Bolt, Pulley & Clamp Style)		
DRAWN BY: LMB	DATE: 2013.OCT.10	
UPDATED BY: LMB	DATE: 2017.DEC.29	

MG-923-06				
Reference #	Part #	Description	Qty	Notes
AB1	1000393166	Main Frame;User Side;ADA23-04;Iced Silver	1	
AB1	1000393167	Main Frame;User Side;ADA23-04;Black Glossy	1	
AB1	1000393168	Main Frame;User Side;ADA23-04;Lace White	1	
AB32	1000353447	Frame Set;900 Series;Iced Silver	1	
AB32	1000353448	Frame Set;900 Series;Black Glossy	1	
AB32	1000353449	Frame Set;900 Series;Lace White	1	
AB38	1000354032	Pull Up Horn Assy;3";Black Ridge	1	Non FS version only.
B3	1000345600	5/8" Single Split Collar	2	
B5	1000323299	2" x 2" TUBE - 79 1/2" (CHROMED)	1	
B6	1000347532	4.5" Pulley for Rope / Cable	4	
B8	1000312976	HANDLE W-STRAP D-RING (SHORT)	1	
B9	1000312233	3" ROUND END CAP	2	
B10	1000310014	End Cap	1	
B28	1000321910	5/8" GUIDE ROD - 76"	2	
B29	1000310339	ROUND WEIGHT STACK BUMPER	2	
B30	1000310273	4" FOOT (SHORT)	1	
B31	1000312237	3" FOOT	2	
B35	1000310331	10ga PLASMA - 1 1/2" x 5 1/4"	1	
B36	1000342962	Stack Guard;Grey;	1	Only on FS version.
B39	1000312893	3/8" SAFETY CLIP	1	
B41	1000384971	1/4" Plasma;Pulley Guard;	2	
B42	1000317727	5/8" RUBBER GROMMET	2	
B43	1000404452	HALF-ROUND RUBBER BUMPER HARD	1	
B45	1000310095	1/2" OD x 1/4" ID Plastic Spacer - 1"	4	
B46	1000345210	7/16" HOLE PLUG; NYLON	4	Only on FS version.
B48	1000421550	Cable Assy;	1	
B49	1000421272	Weight Stack Bracket;900 SRS;	1	
V1	1000359953	Decal;Warning;Single Station;English	1	Non FS version only.
V1	1000364025	Decal;Warning;Single Station;French	1	Non FS version only.
V25	1000315894	DECAL MATRIX 11X1 BLK	2	
V26	1000384006	Serial Number Label;4" x 1.5";3M;	1	
V27	1000312342	BOLT DOWN WARNING	1	
V33	1000345333	Decal, Hi-low ROM	1	
V34	1000345334	Decal, Hi Low ROM 17	1	
V40	1000421523	900 Step Stack Decal	1	
V49	1000363760	Decal;Warning;Multi Station;English	1	
V49	1000363766	Decal;Warning;Multi Station;French	1	
Z7	1000310088	Washer, Curved, 1/2"	12	
Z11	1000312099	HCS 1/2-13 x 4 1/4"	6	
Z12	1000312097	SCREW;HH;.500-13 x 3.75;ZN;	2	
Z13	1000310219	SCREW;HH;.250-20 x 0.75;ZN;	6	Only on FS version.
Z14	1000310097	SCREW;HH;.250-20 x 2.00;ZN;	4	
Z15	1000309851	HCS 3/8-16 x 2 1/4" - ZINC	2	
Z16	1000309871	3/8-16 x 2" BOLT	2	
Z17	1000312161	NUT;NLK;.500-13;ZN	8	
Z18	1000308428	3/8" NUT	6	
Z19	1000309854	1/4" NYLON JAM NUT	4	
Z20	1000310096	1/4" SPLIT LOCK WASHER	8	
Z21	1000312700	7/16" FLAT WASHER	4	
Z22	1000308436	WASHER;FLT;USS;Φ0.344XΦ0.875X.063;ZN;	12	
Z23	1000308446	WASHER;FLT;USS;Φ0.281XΦ0.734X.063;ZN;	6	Only on FS version.
Z37	1000311963	SCREW;HH;.375-16 x 1.25;ZN;	2	
Z44	1000308442	SCREW;SET;.3125-18 X 1.00;SS	1	

FS Side Set	1000329670	900 TOWER SERIES FREE STANDING SIDE SET	1	Only on FS version.
Coupler Set	1000344108	900 Series Coupler Kit;Metal	2	Non FS version only.
Coupler 1	1000337789	連接片;;;SPHC;186x76.2x23.4x4.76T;;	2	Non FS version only.
Coupler 2	1000314246	SCREW;HH;.375-16 x 3.50;ZN;	1	Non FS version only.
Coupler 3	1000308444	WASHER;FLT;USS;Φ0.406XΦ1.000X.063;ZN;	2	Non FS version only.
Coupler 4	1000308428	3/8" NUT	1	Non FS version only.
Coupler 5	1000342964	Pipe;3/4" OD x 1/2" ID;w/ Zinc Coating;	1	Non FS version only.
Single Pulley Set	1000386596	WEIGHT STACK PULLEY ASSEMBLY	1	
Single Pulley 1	1000406013	Weldment; Head Plate Pulley;Black Ridge	1	
Single Pulley 2	1000386597	Screw;HH;.250-20 x 3;ZN;	1	
Single Pulley 3	1000312876	SCREW;HH;.375-16 x 3.25;ZN;	1	
Single Pulley 4	1000310019	SCREW;HH;.500-13 x 2.00;ZN;	1	
Single Pulley 5	1000309854	1/4" NYLON JAM NUT	1	
Single Pulley 6	1000308428	3/8" NUT	1	
Single Pulley 7	1000309846	1/2" JAM NUT	1	
Single Pulley 8	1000312159	1/2 - 13 NUT	1	
Single Pulley 9	1000310096	1/4" SPLIT LOCK WASHER	2	
Single Pulley 10	1000309858	Machine Bushing 3/8 ID x 5/8OD 18ga Zinc	2	
Single Pulley 11	1000309847	Machine Bushing 1/2" ID X 7/8" OD 18GA	3	
Single Pulley 12	1000312236	Handle Assy	1	
Double Pulley Set	1000388323	Double Pulley Set w/ Grip;900 Series;	1	
DP AB9	1000346398	Weldment;Swivel Pulley;	1	
DP B2	1000312298	1/2" BRASS BUSHING	2	
DP B10	1000353677	Nylon Sleeve;Tapped;	1	
DP B11	1000347532	4.5" Pulley for Rope / Cable	2	
DP B14	1000350424	Bumper	2	
DP V27	1000376099	警告貼標;重端;;;PVC;;英文;GM106	2	
DP V7	1000308473	Decal, warning Hand Pinch	2	
DP Z13	1000353678	Screw;BH;10-32x5"	2	
DP Z18	1000308428	3/8" NUT	2	
DP Z19	1000350425	Nut;10/32"	2	
DP Z23	1000309871	3/8-16 x 2" BOLT	2	
DP Z25	1000312167	WASHER;FLT;USS;Φ0.203XΦ0.562X.040;ZN;#10	2	
DP Z27	1000350426	Screw;10/32";.875L;	2	
DP Z6	1000309858	Machine Bushing 3/8 ID x 5/8OD 18ga Zinc	1	
DP AB1	1000384885	Cable Adjustment	1	
DP B8	1000308424	SPRING PIN ASSEMBLY	1	
DP B15	1000371229	Block;Cable Clamp;	1	
DP Z16	1000309854	1/4" NYLON JAM NUT	4	
DP Z20	1000310096	1/4" SPLIT LOCK WASHER	8	
DP Z21	1000336429	SCREW;HH;.250-20 x 1.50;ZN;	4	
DP Kit 1	1000318101	HAND GRIP 1.0" 0-12"LONG	1	
DP V1	1000412711	Decal;Warning Pull Pin	1	
DP Z17	1000312161	NUT;NLK;.500-13;ZN	1	
DP Z22	1000310301	SCREW;HH;.500-13 x 4.50;ZN;	1	
DP Z24	1000309847	Machine Bushing 1/2" ID X 7/8" OD 18GA	3	
DP Pulley Housing Set	1000393923	DOUBLE PULLEY;BOOK FORMED	1	
DP Slide Assy	1000393924	SLIDE ASSEMBLY; FORMED BOOK	1	
Weight Stack Set	1000421548	Weight Stack Assy;Stepped;#230;	1	
Weight Stack 1	1000310334	6000 TOP PLATE	1	
Weight Stack 2	1000310343	Orange SELECTOR PIN w/ 6 1/2" CORD	1	
Weight Stack 3	1000312817	5/16" SPLIT LOCK WASHER	2	
Weight Stack 4	1000312127	BHS 5/16" - 1"	2	
Weight Stack 6	1000359722	2" OD x .562 ID x .187 F/W Zinc	1	
Weight Stack 7	1000421549	Center Stick;14";CR125;	1	

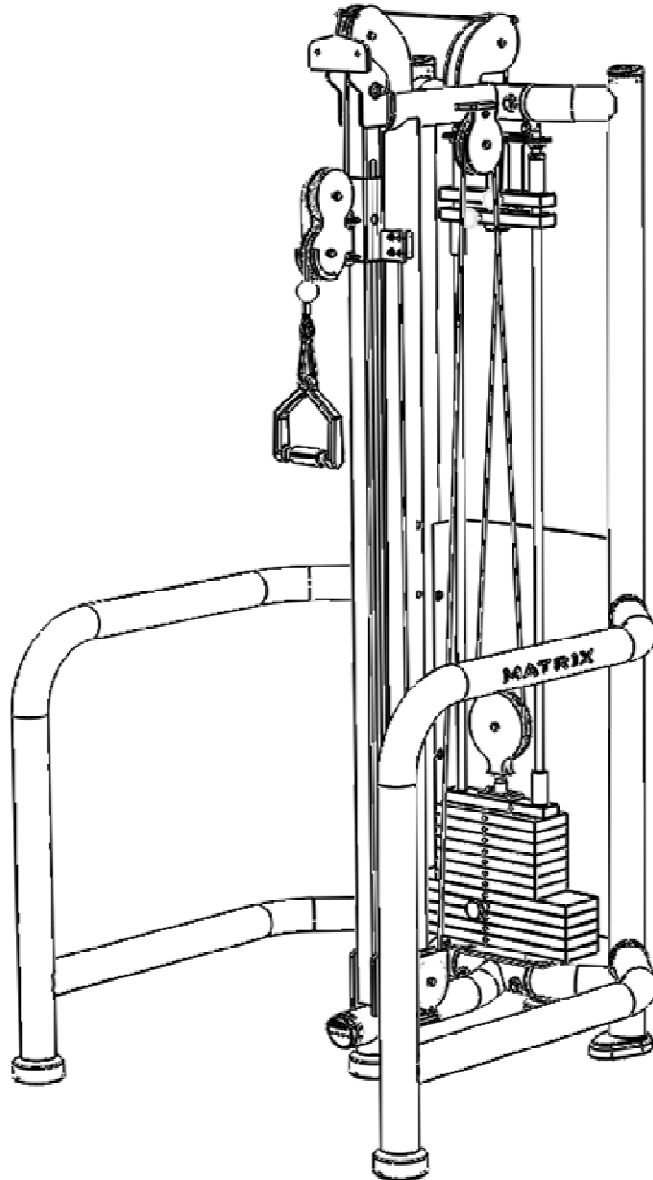
Weight Stack 8	1000321944	WEIGHT PLATE 20# W_BUSHINGS 18.4 X 4.3X 1	8	
Weight Stack 9	1000312880	CAST IRON	5	
Kit 1	1000318510	HAND GRIP 1.25 DIA 12"+LONG	1	
Kit 1 K1	1000369933	Tube Collar;25.4MM;	1	
Kit 1 K2	1000308469	Cap;End Tube;25.4MM ID;	2	
Kit 1 K3	1000316932	泡棉;把手;;;Φ24x5tx1524L;JHTNA-M;	1	
Kit 1 Z1	1000309773	Screw;Set;M6 x 1.0P x 5L;BP;POT;	8	

Reference #	Part #	Description	Qty	Notes
MG-FS923-06				
AB1	1000393166	Main Frame;User Side;ADA23-04;Iced Silver	1	
AB1	1000393167	Main Frame;User Side;ADA23-04;Black Glossy	1	
AB1	1000393168	Main Frame;User Side;ADA23-04;Lace White	1	
AB32	1000394444	Frame Set;FS900 Series;Iced Silver	1	
AB32	1000394445	Frame Set;FS900 Series;Black Glossy	1	
AB32	1000394446	Frame Set;FS900 Series;Lace White	1	
AB38	1000354032	Pull Up Horn Assy;3";Black Ridge	1	Non FS version only.
B3	1000345600	5/8" Single Split Collar	2	
B5	1000323299	2" x 2" TUBE - 79 1/2" (CHROMED)	1	
B6	1000347532	4.5" Pulley for Rope / Cable	4	
B8	1000312976	HANDLE W-STRAP D-RING (SHORT)	1	
B9	1000312233	3" ROUND END CAP	2	
B10	1000310014	End Cap	1	
B28	1000321910	5/8" GUIDE ROD - 76"	2	
B29	1000310339	ROUND WEIGHT STACK BUMPER	2	
B30	1000310273	4" FOOT (SHORT)	1	
B31	1000312237	3" FOOT	2	
B35	1000310331	10ga PLASMA - 1 1/2" x 5 1/4"	1	
B36	1000342962	Stack Guard;Grey;	1	Only on FS version.
B39	1000312893	3/8" SAFETY CLIP	1	
B41	1000384971	1/4" Plasma;Pulley Guard;	2	
B42	1000317727	5/8" RUBBER GROMMET	2	
B43	1000404452	HALF-ROUND RUBBER BUMPER HARD	1	
B45	1000310095	1/2" OD x 1/4" ID Plastic Spacer - 1"	4	
B46	1000345210	7/16" HOLE PLUG; NYLON	4	Only on FS version.
B48	1000421550	Cable Assy;	1	
B49	1000421272	Weight Stack Bracket;900 SRS;	1	
V1	1000359953	Decal;Warning;Single Station;English	1	Non FS version only.
V1	1000364025	Decal;Warning;Single Station;French	1	Non FS version only.
V25	1000315894	DECAL MATRIX 11X1 BLK	2	
V26	1000384006	Serial Number Label;4" x 1.5";3M;	1	
V27	1000312342	BOLT DOWN WARNING	1	
V33	1000345333	Decal, Hi-low ROM	1	
V34	1000345334	Decal, Hi Low ROM 17	1	
V40	1000421523	900 Step Stack Decal	1	
V49	1000363760	Decal;Warning;Multi Station;English	1	
V49	1000363766	Decal;Warning;Multi Station;French	1	
Z7	1000310088	Washer, Curved, 1/2"	8	
Z11	1000312099	HCS 1/2-13 x 4 1/4"	4	
Z12	1000312097	SCREW;HH;.500-13 x 3.75;ZN;	2	
Z13	1000310219	SCREW;HH;.250-20 x 0.75;ZN;	6	Only on FS version.
Z14	1000310097	SCREW;HH;.250-20 x 2.00;ZN;	4	
Z15	1000309851	HCS 3/8-16 x 2 1/4" - ZINC	2	
Z16	1000309871	3/8-16 x 2" BOLT	2	
Z17	1000312161	NUT;NLK;.500-13;ZN	8	
Z18	1000308428	3/8" NUT	6	
Z19	1000309854	1/4" NYLON JAM NUT	4	
Z20	1000310096	1/4" SPLIT LOCK WASHER	8	
Z21	1000312700	7/16" FLAT WASHER	4	
Z22	1000308436	WASHER;FLT;USS;Φ0.344XΦ0.875X.063;ZN;	12	
Z23	1000308446	WASHER;FLT;USS;Φ0.281XΦ0.734X.063;ZN;	6	Only on FS version.
Z37	1000311963	SCREW;HH;.375-16 x 1.25;ZN;	2	
Z44	1000308442	SCREW;SET;.3125-18 X 1.00;SS	1	

FS Side Set	1000329670	900 TOWER SERIES FREE STANDING SIDE SET	1	Only on FS version.
FS Side 1	1000394473	FS Arm Assy;Right;923-02;	1	Only on FS version.
FS Side 2	1000394458	FS Arm Assy;Left;923-02;	1	Only on FS version.
FS Side 3	1000310289	3" Connector Joint	1	Only on FS version.
FS Side 4	1000310273	4" FOOT (SHORT)	1	Only on FS version.
FS Side 5	1000310088	Washer, Curved, 1/2"	1	Only on FS version.
FS Side 6	1000310301	SCREW;HH; .500-13 x 4.50;ZN;	1	Only on FS version.
FS Side 7	1000315894	DECAL MATRIX 11X1 BLK	1	Only on FS version.
Coupler Set	1000344108	900 Series Coupler Kit;Metal	2	Non FS version only.
Single Pulley Set	1000386596	WEIGHT STACK PULLEY ASSEMBY	1	
Single Pulley 1	1000406013	Weldment; Head Plate Pulley;Black Ridge	1	
Single Pulley 2	1000386597	Screw;HH; .250-20 x 3;ZN;	1	
Single Pulley 3	1000312876	SCREW;HH; .375-16 x 3.25;ZN;	1	
Single Pulley 4	1000310019	SCREW;HH; .500-13 x 2.00;ZN;	1	
Single Pulley 5	1000309854	1/4" NYLON JAM NUT	1	
Single Pulley 6	1000308428	3/8" NUT	1	
Single Pulley 7	1000309846	1/2" JAM NUT	1	
Single Pulley 8	1000312159	1/2 - 13 NUT	1	
Single Pulley 9	1000310096	1/4" SPLIT LOCK WASHER	2	
Single Pulley 10	1000309858	Machine Bushing 3/8 ID x 5/8OD 18ga Zinc	2	
Single Pulley 11	1000309847	Machine Bushing 1/2" ID X 7/8" OD 18GA	3	
Single Pulley 12	1000312236	Handle Assy	1	
Double Pulley Set	1000388323	Double Pulley Set w/ Grip;900 Series;	1	
DP AB9	1000346398	Weldment;Swivel Pulley;	1	
DP B2	1000312298	1/2" BRASS BUSHING	2	
DP B10	1000353677	Nylon Sleeve;Tapped;	1	
DP B11	1000347532	4.5" Pulley for Rope / Cable	2	
DP B14	1000350424	Bumper	2	
DP V27	1000376099	警告貼標;重端;;;PVC;;英文;GM106	2	
DP V7	1000308473	Decal, warning Hand Pinch	2	
DP Z13	1000353678	Screw;BH;10-32x5"	2	
DP Z18	1000308428	3/8" NUT	2	
DP Z19	1000350425	Nut;10/32"	2	
DP Z23	1000309871	3/8-16 x 2" BOLT	2	
DP Z25	1000312167	WASHER;FLT;USS;Φ0.203XΦ0.562X.040;ZN;#10	2	
DP Z27	1000350426	Screw;10/32";.875L;	2	
DP Z6	1000309858	Machine Bushing 3/8 ID x 5/8OD 18ga Zinc	1	
DP AB1	1000384885	Cable Adjustment	1	
DP B8	1000308424	SPRING PIN ASSEMBLY	1	
DP B15	1000371229	Block;Cable Clamp;	1	
DP Z16	1000309854	1/4" NYLON JAM NUT	4	
DP Z20	1000310096	1/4" SPLIT LOCK WASHER	8	
DP Z21	1000336429	SCREW;HH; .250-20 x 1.50;ZN;	4	
DP Kit 1	1000318101	HAND GRIP 1.0" 0-12"LONG	1	
DP V1	1000412711	Decal;Warning Pull Pin	1	
DP Z17	1000312161	NUT;NLK; .500-13;ZN	1	
DP Z22	1000310301	SCREW;HH; .500-13 x 4.50;ZN;	1	
DP Z24	1000309847	Machine Bushing 1/2" ID X 7/8" OD 18GA	3	
DP Pulley Housing Set	1000393923	DOUBLE PULLEY;BOOK FORMED	1	
DP Slide Assy	1000393924	SLIDE ASSEMBLY; FORMED BOOK	1	
Weight Stack Set	1000421548	Weight Stack Assy;Stepped;#230;	1	
Weight Stack 1	1000310334	6000 TOP PLATE	1	
Weight Stack 2	1000310343	Orange SELECTOR PIN w/ 6 1/2" CORD	1	
Weight Stack 3	1000312817	5/16" SPLIT LOCK WASHER	2	
Weight Stack 4	1000312127	BHS 5/16" - 1"	2	

Weight Stack 6	1000359722	2" OD x .562 ID x .187 F/W Zinc	1	
Weight Stack 7	1000421549	Center Stick;14";CR125;	1	
Weight Stack 8	1000321944	WEIGHT PLATE 20# W_BUSHINGS 18.4 X 4.3X 1	8	
Weight Stack 9	1000312880	CAST IRON	5	
Kit 1	1000318510	HAND GRIP 1.25 DIA 12"+LONG	1	
Kit 1 K1	1000369933	Tube Collar;25.4MM;	1	
Kit 1 K2	1000308469	Cap;End Tube;25.4MM ID;	2	
Kit 1 K3	1000316932	泡棉;把手;;;Φ24x5tx1524L;JHTNA-M;	1	
Kit 1 Z1	1000309773	Screw;Set;M6 x 1.0P x 5L;BP;POT;	8	

Matrix FS923 Free standing ADJ pulley



Quantity

1

862-040
Serial plate
Non - EN

MATRIX

Model: XXXXXXXX Max User Weight: XXX lbs
 S/N: XXXXXXXXXXXXXXXXXXXX Max Training Weight: XXX lbs
 Mfg Date: XX-XX-XXXX EN957-1, EN957-2 Class S

UPC

Matrix Fitness
1600 Landmark Dr
Cottage Grove, WI 53527
(888) 695-4863

4

854-044
280 mm Matrix



1

854-982
Bolt down

WARNING

DO NOT USE equipment if not properly secured to floor. Manufacturer requires that this equipment be secured to the floor to stabilize and eliminate rocking or tipping over. Use a licensed contractor.

1

WARNING

PLEASE DO NOT SECURE WEIGHT CHARACTERISTICS ON THIS EQUIPMENT. FOLLOW THESE PRECAUTIONS TO AVOID INJURY:

1. Read the manual for the use of this equipment. This equipment is not intended for use by persons with reduced physical capacity or mental capabilities, a lack of experience and knowledge, or under the influence of drugs, alcohol, or medication. Users are responsible for their safety.
2. All warnings and instructions should be read and understood before use of this equipment. For this equipment, use the correct procedure.
3. All warnings and instructions should be read and understood before use. DO NOT use equipment if it appears damaged or inoperable.
4. Check for use that this product is in compliance with applicable laws and regulations.
5. Check for use that this product is in compliance with applicable laws and regulations.
6. Check for use that this product is in compliance with applicable laws and regulations.
7. If you are not familiar with the weight stack, consult the manual for proper use.
8. NEVER use dumbbells or other items to increase the weight stack.
9. ALWAYS use proper lifting technique. Do not lift with your back. Use your legs and back to lift. Do not lift with your back. Use your legs and back to lift.
10. ALWAYS use proper lifting technique. Do not lift with your back. Use your legs and back to lift. Do not lift with your back. Use your legs and back to lift.
11. ALWAYS use proper lifting technique. Do not lift with your back. Use your legs and back to lift. Do not lift with your back. Use your legs and back to lift.
12. ALWAYS use proper lifting technique. Do not lift with your back. Use your legs and back to lift. Do not lift with your back. Use your legs and back to lift.
13. ALWAYS use proper lifting technique. Do not lift with your back. Use your legs and back to lift. Do not lift with your back. Use your legs and back to lift.
14. ALWAYS use proper lifting technique. Do not lift with your back. Use your legs and back to lift. Do not lift with your back. Use your legs and back to lift.
15. ALWAYS use proper lifting technique. Do not lift with your back. Use your legs and back to lift. Do not lift with your back. Use your legs and back to lift.
16. ALWAYS use proper lifting technique. Do not lift with your back. Use your legs and back to lift. Do not lift with your back. Use your legs and back to lift.
17. ALWAYS use proper lifting technique. Do not lift with your back. Use your legs and back to lift. Do not lift with your back. Use your legs and back to lift.
18. ALWAYS use proper lifting technique. Do not lift with your back. Use your legs and back to lift. Do not lift with your back. Use your legs and back to lift.
19. ALWAYS use proper lifting technique. Do not lift with your back. Use your legs and back to lift. Do not lift with your back. Use your legs and back to lift.
20. ALWAYS use proper lifting technique. Do not lift with your back. Use your legs and back to lift. Do not lift with your back. Use your legs and back to lift.

Always Select a Licensed Contractor

2 each



854-985
Pinch hazard



1

862-360 Weight Stack



862-360 Weight Stack

12 lb	5.4 kg
24 lb	10.9 kg
36 lb	16.3 kg
48 lb	21.8 kg
60 lb	27.2 kg
72 lb	32.7 kg
92 lb	41.7 kg
112 lb	50.8 kg
132 lb	59.9 kg
152 lb	68.9 kg
172 lb	78 kg
192 lb	87.1 kg
212 lb	96.2 kg
232 lb	105.2 kg
252 lb	114.3 kg
272 lb	123.4 kg
292 lb	132.4 kg
312 lb	141.5 kg
332 lb	150.6 kg
352 lb	159.7 kg
372 lb	168.7 kg
392 lb	177.8 kg

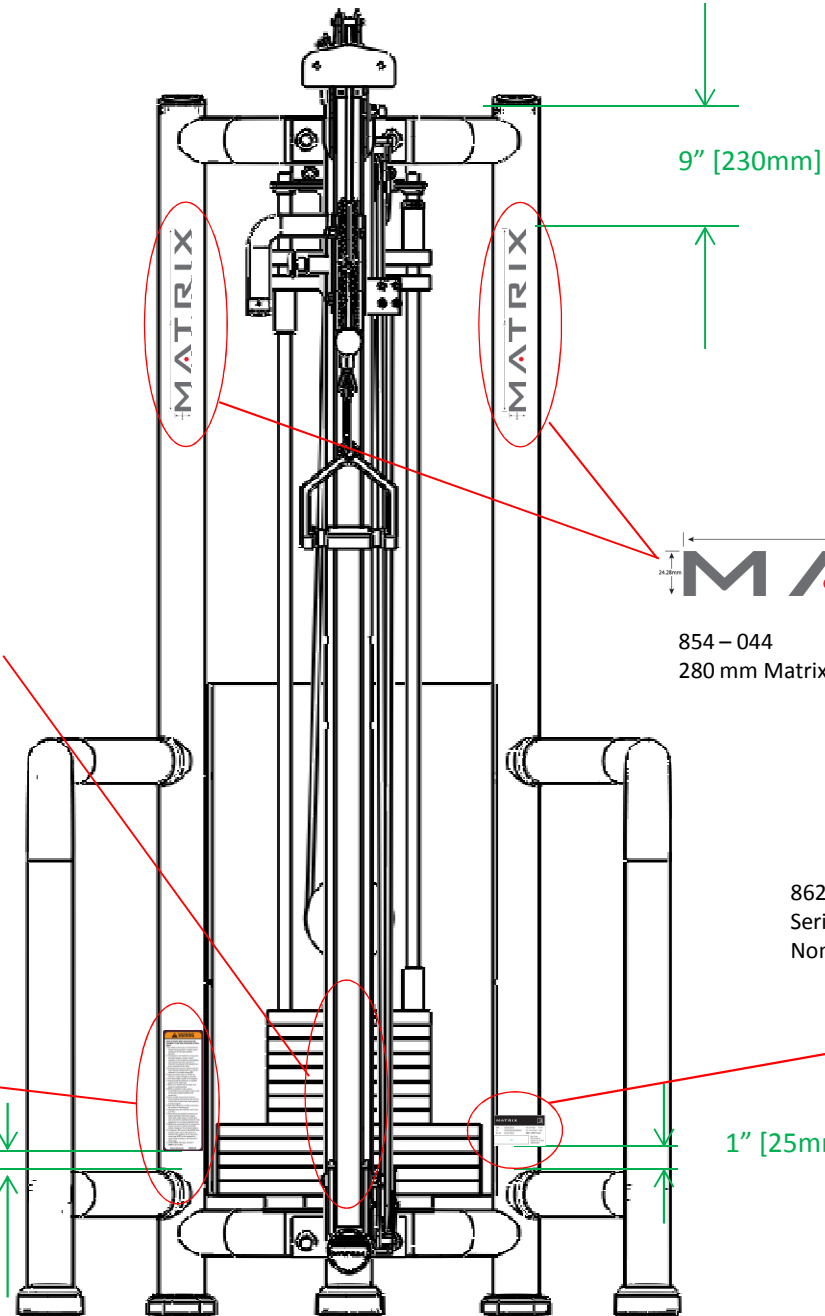
862-081 Weight Plates

WARNING

DEATH OR SERIOUS INJURY CAN OCCUR ON THIS EQUIPMENT. FOLLOW THESE PRECAUTIONS TO AVOID INJURY!

1. Keep children under the age of 14 away from this strength training equipment. Teenagers must be supervised at all times while using this equipment.
2. This equipment is not intended for use by persons with reduced physical, sensory or mental capabilities, or lack of experience and knowledge, unless they have been given supervision or instruction concerning use of the equipment by a person responsible for their safety.
3. All warnings and instructions should be read and proper instruction obtained prior to use. Use this equipment for its intended purpose ONLY.
4. Inspect the machine before use. DO NOT use machine if it appears damaged or inoperable.
5. Do not exceed weight capacity of this equipment.
6. Check to see that the selector pin is completely inserted into the weight stack.
7. NEVER use the machine with the weight stack pinned in an elevated position.
8. NEVER use dumbbells or other means to incrementally increase the weight resistance. Only use the means provided directly from the manufacturer.
9. Injuries to health may result from incorrect or excessive training. Cease exercise if you feel faint or dizzy. Obtain a medical exam before beginning an exercise program.
10. Keep body, clothing, hair, and fitness accessories free and clear of all moving parts.
11. Adjustable stops, when provided, must be used at all times.
12. When adjusting any adjustable mechanism (stop position, seat position, pad location, range of motion limiter, pulley carriage, or any other type), make certain that the adjustable mechanism is fully engaged prior to use to prevent unintended motion.
13. Manufacturer recommends that this equipment be secured to the floor to stabilize and eliminate rocking or tipping over. Use a licensed contractor.
14. If equipment is NOT secured to floor, NEVER allow resistance straps, ropes or other means to be attached to this equipment, as this may result in serious injury. NEVER use this equipment for support during stretching, as this may result in serious injury.
15. DO NOT REMOVE THIS LABEL. REPLACE IF DAMAGED OR ILLEGIBLE.

General SelectORIZED 1000363790



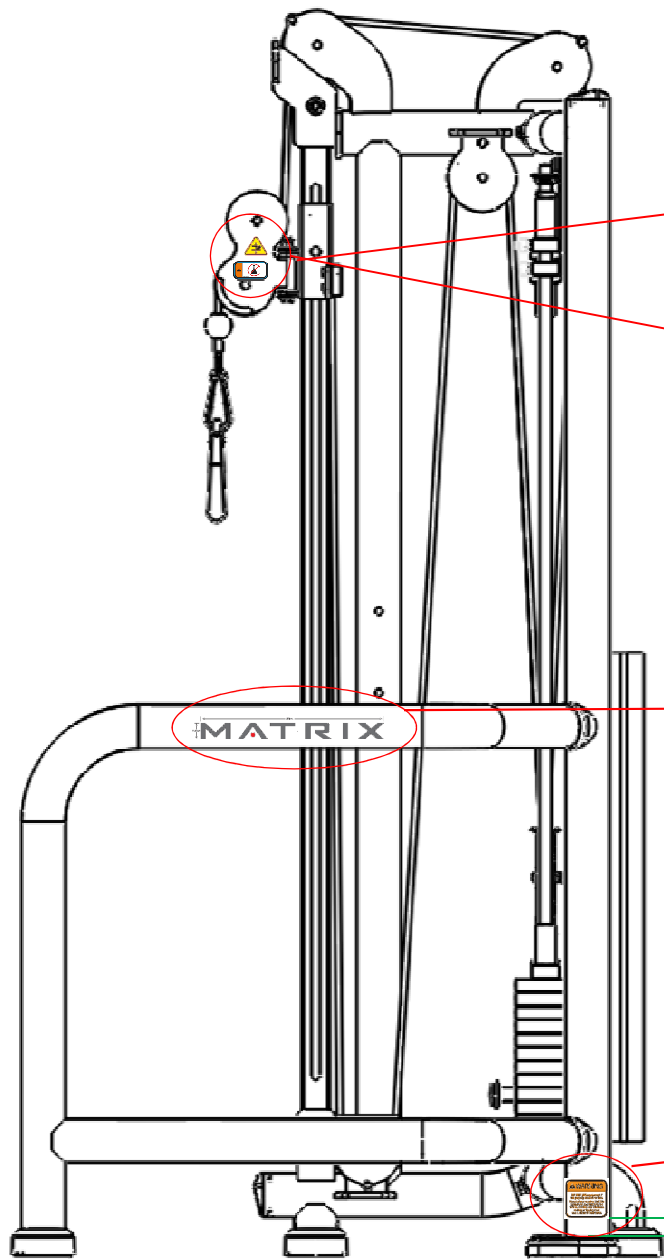
862-040
Serial plate
Non - EN

MATRIX

Model	XXXXXXXXXX	Max User Weight	XXX lbs
SN	XXXXXXXXXXXXXXXXXX	Max Training Weight	XXX lbs
Mfg Date	XX-XX-XXXX	EN957-1, EN957-2 Class S	

Matrix Fitness
1500 Lindmark Dr
Cottage Grove, WI 53527
1(888) 693-4963

UPC



854-985
Pinch
hazard



MATRIX

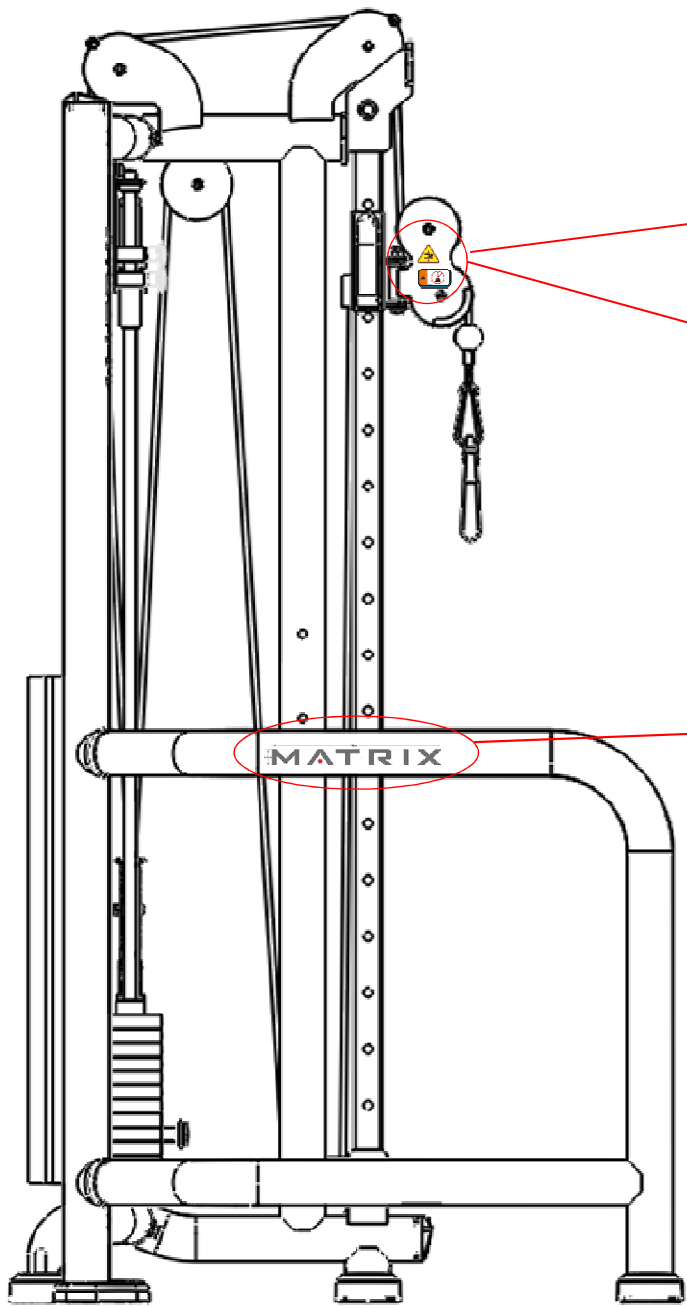
24.2mm
MATRIX

854 - 044
280 mm Matrix

854-982
Bolt down



1" [25mm]



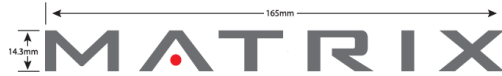
854-985
Pinch
hazard



854 - 044
280 mm Matrix

Matrix QC template

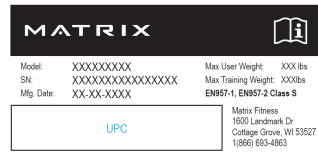
854-043
166mm Matrix



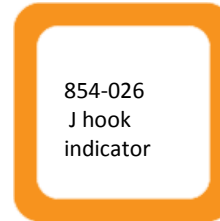
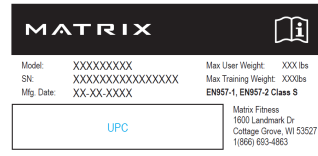
854-044
280mm Matrix



854-857
Serial plate



862-040
Serial plate
Non - EN



854-026
J hook
indicator

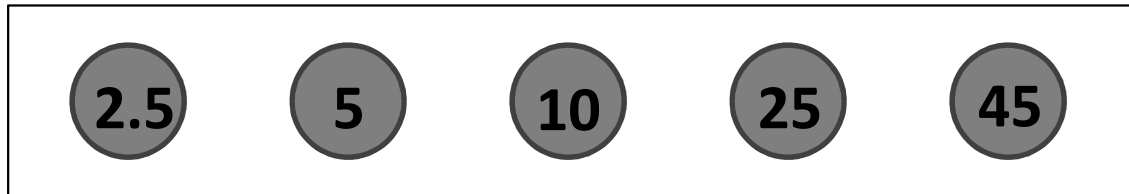
854-985
Pinch
hazard



854-986
Moving
hazard



Weight horn caps



854-982
Bolt down



854-979
ADJ stop 1



854-980
ADJ stop 2

