

Prepared by: Christopher Lueck	Date Prepared: 8/26/2016
Time Required: 30 minutes	Models Affected: MG-OPT14U-02

## OVERVIEW

Follow these instructions to mount MG-OPT14U-02 on an A or D series rack.



## REQUIRED TOOLS

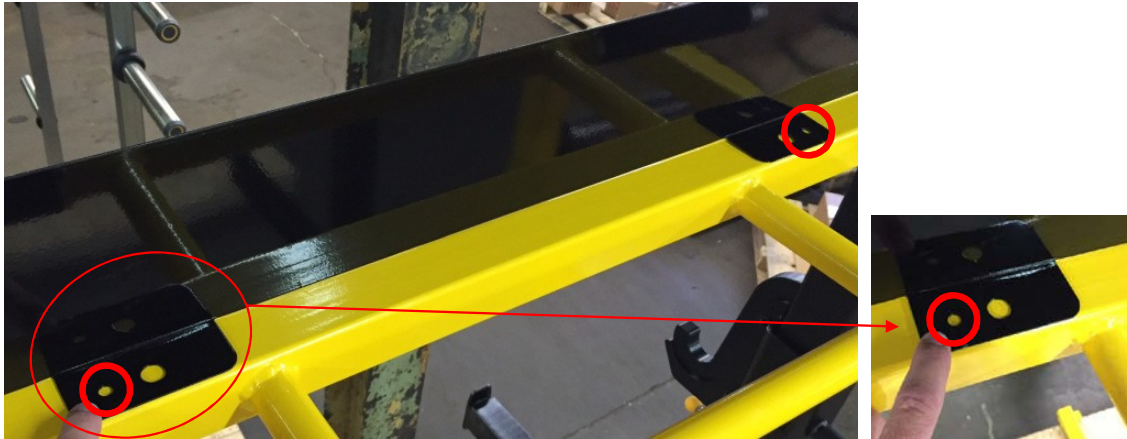
- Clamp
- Drill with 7/32" drill bit
- ¼-20 tap
- Two ¼-20 x ½ long bolts
- Two ¼" washers

## PROCEDURE

1. Center the nameplate on top of the chin bar.



2. Clamp the nameplate into position.
3. Locate the two small holes in the nameplate.



4. Drill the chin bar using a 7/32" drill bit, tap with a ¼-20 tap.
5. Secure the nameplate down using ¼-20 x ½" long bolts and ¼" washers.

Prepared by: Christopher Lueck	Date Prepared: 8/26/2016
Time Required: 30 minutes	Models Affected: MG-OPT14U-02

## OVERVIEW

Follow these instructions to mount MG-OPT14U-02 on an MR series rack.



## REQUIRED TOOLS

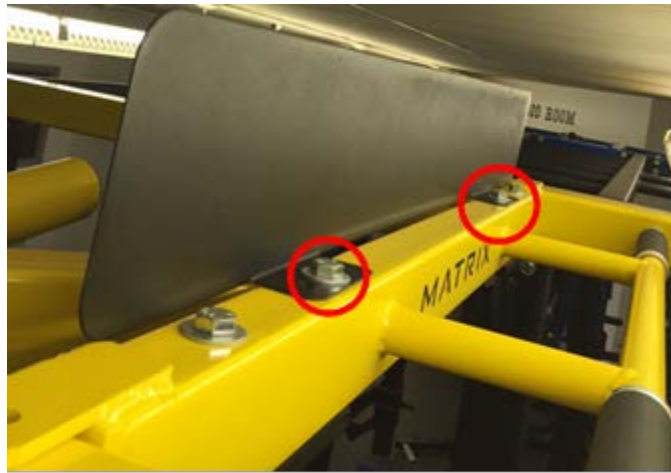
- Wrench

## PROCEDURE

1. Remove the two bolts shown below.



2. Place the nameplate on the top of the chin bar so the large holes in the nameplate line-up with the holes from the bolts just removed.



3. Re-install bolts going through the corner brace, chin bar and the nameplate, tighten.