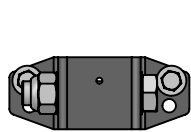
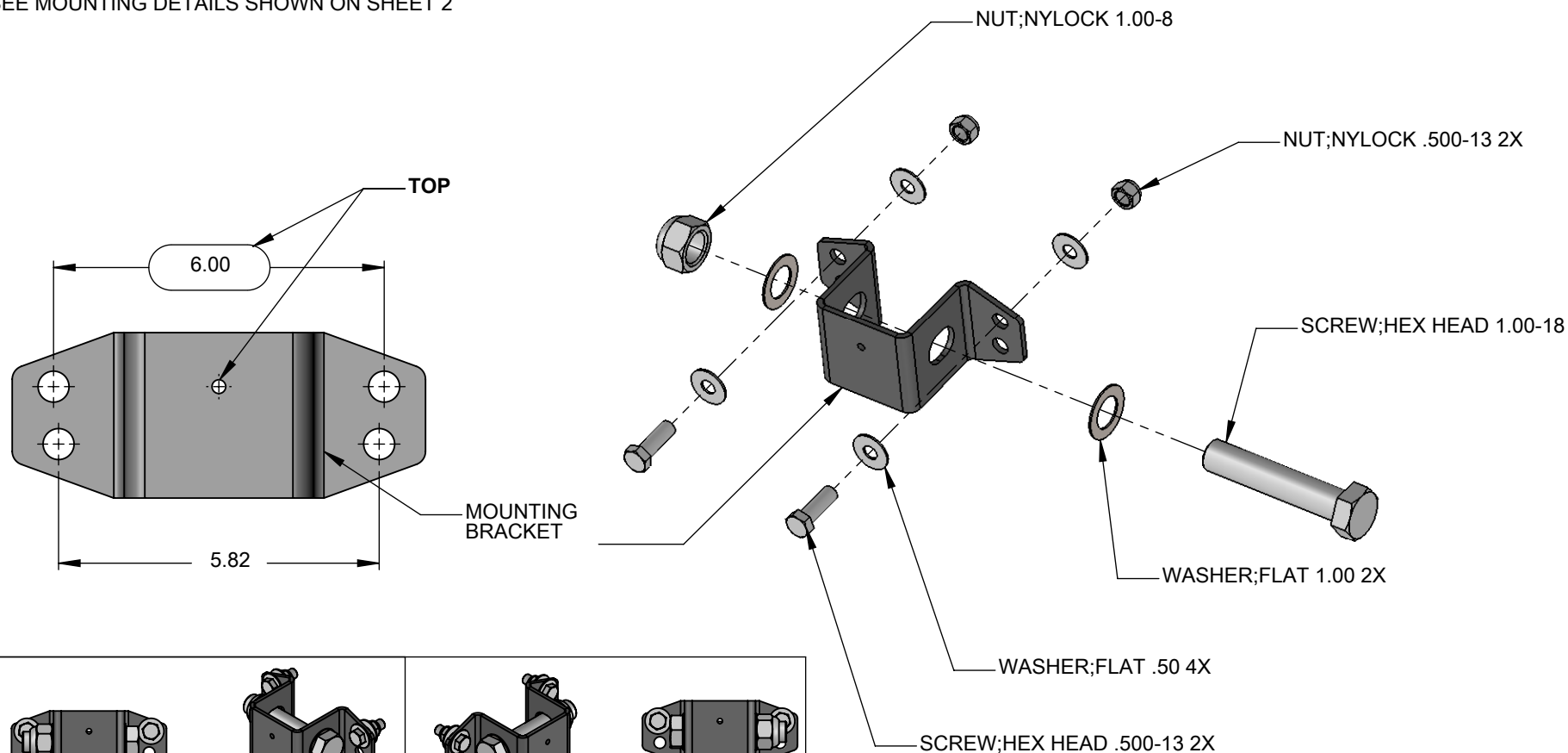
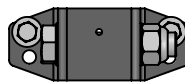
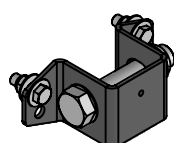


TOOLS NEEDED: 3/4" WRENCHES X 2.
1 1/2" WRENCHES X2.
TORQUE SCREWS TO 57 ft-lbs

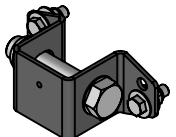
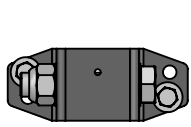
ASSEMBLE WITH PROVIDED BRACKET AND HARDWARE
(EXPLODED VIEW SHOWN BELOW FOR REFERENCE ONLY)
SEE MOUNTING DETAILS SHOWN ON SHEET 2



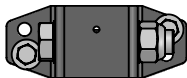
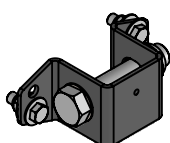
HORIZONTAL MOUNTING LEFT
(SHOWN EXPLODED)



HORIZONTAL MOUNTING RIGHT

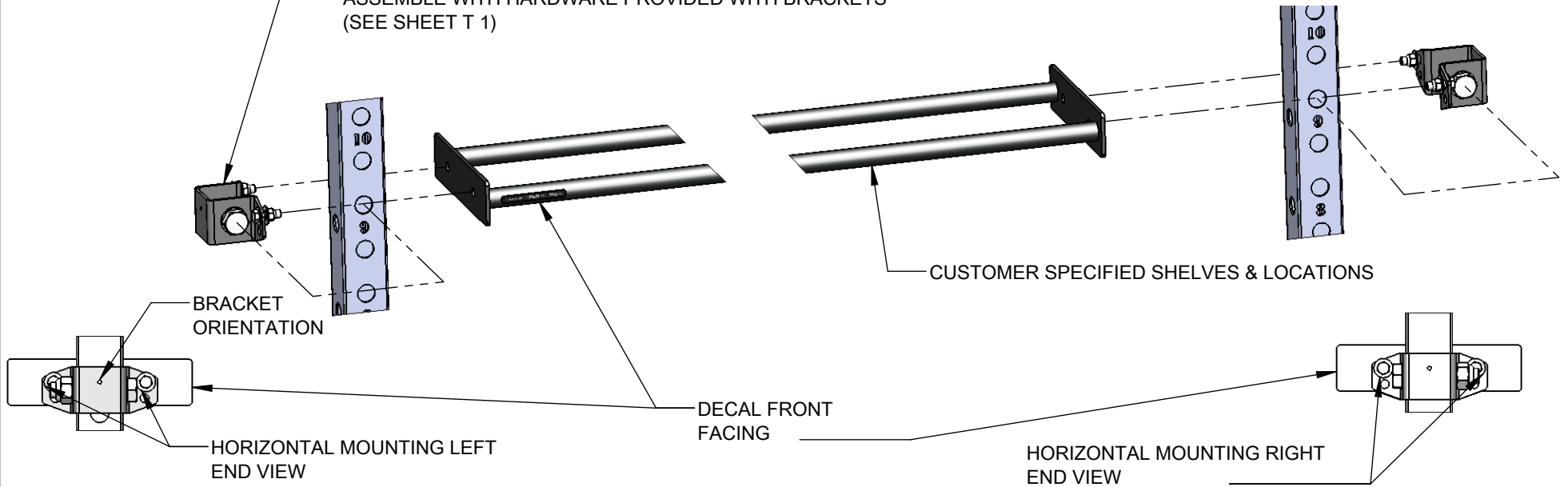


ANGLED MOUNTING LEFT



ANGLED MOUNTING RIGHT

XS18-02 SHELF SR BRACKET MOUNTING EXAMPLE:
 HORIZONTAL SHELF MOUNTING
 XS01-04 107cm/42" MB/SB SHELF (SHOWN EXPLODED FOR REFERENCE ONLY)
 ASSEMBLE WITH HARDWARE PROVIDED WITH BRACKETS
 (SEE SHEET T 1)



XS18-02 SHELF SR BRACKET MOUNTING EXAMPLE:
 ANGLED SHELF MOUNTING
 XS01-04 107cm/42" MB/SB SHELF (SHOWN EXPLODED FOR REFERENCE ONLY)
 ASSEMBLE WITH HARDWARE PROVIDED WITH BRACKETS
 (SEE SHEET T 1)

